

NALA LOCAL MUNICIPALITY

ANNUAL REPORT



2014/15

CHAPTER 1

MAYORS FOREWORD AND EXECUTIVE SUMMARY

MAYORS FOREWORD



It is with great honour and gratitude to present the 2014/15 Annual report. The report gives a reflection of our performance during the period under review and at the same time depicts our strategic agenda going forward.

This Annual Report is compiled in line with Section 46 of the Municipal Systems Act 2000 (Act 32 of 2000) and Section 21 of the Municipal Finance Management Act (Act 56 of 2003).

Celebrating 20 years of democracy, our Municipality forms part of South Africa declaring that Nala Local Municipality is a better place than before 1994.

As Council we are indeed committed to continuously build and strengthen our core competencies and capabilities as an institution to accelerate service delivery and to improve the lives of our people, in particular the most vulnerable, the poor.

Our core function as a Municipality is to provide basic services, namely, Water, Sanitation, Refuse Removal, Roads and Electricity

Our performance with regard to the above proved to be on course. During the drought period the country has experienced, the Municipality was able to provide water uninterruptedly. Furthermore, additional residential site were with water and sanitation were established.

The Municipality is continuously fast-tracing the formalization of informal settlement. This process is towards its final stage.

Our focus still remains as Council, to eradicate poverty, fight inequality and create decent jobs.

It is our commitment as Council to continue to engage our people and strengthen our Public Participation through various forms; Public meetings, ward meetings, ward committees, stakeholders meetings, professionals meeting, church leaders, etc.

The Municipality is further committed to support Cooperatives and Small Medium Macro Enterprises (SMME's). Our endeavor to partner with the Business Chamber of Commerce is critical so as to stimulate economic growth through incentives and by supporting Cooperatives and SMME's. Council committed to National Treasury to support administration in fighting fraud and corruption.

To this end on our key priority for the year under reviewed was to focus on improving our audit opinion.

Our approach as leadership was to support management and strengthen our oversight role.

I am thus pleased to report in the 2014/2015 financial year on the improvement of the audit opinion. Moving forward, the Municipality must strengthen its systems to sustain or rather move towards a much more improved opinion

Councils will play its oversight role without any form of interference in the administrative matters of the Municipality

Our intentions/objectives moving forward in to the outer years is to ensure the formalization of informal settlements to ensure that all communities are provided with decent basic services.

MUNICIPAL MANAGER'S OVERVIEW

Section 121 (3) of the Municipal Finance Management Act 2003, read together with section 46 of the Municipal System Act 200, prescribes the minimum contents of the Annual Report of a Municipality. Circular 63 Of 2011 provides guidelines and framework on how the contents of the Annual Report should be compiled. In preparation of this Annual Report management considered these legislative requirements. We also considered the importance of reliability, usefulness and relevance of the Annual Financial Statements and performance information as contained herein.

This Annual Report therefore provides an authoritative record of the activities of the Nala Local Municipality during the financial year under review, and therefore seeks to promote accountability to the Local community for the decision we made throughout the 2014/15 Financial year.

Section 152 of the Constitution of South Africa requires that the Municipality must strive, within its Financial and administrative capacity, to achieve the following objects of the Local Government:

- a) Provide democratic and accountable Government.
- b) Ensure the provision of services to Communities in a sustainable manner.
- c) Promote social and economic development.
- d) Promote a safe and healthy environment.
- e) Encourage the involvement of communities and Community organizations in the matters of Local Government.

The recent launch of the Back to Basics approach is designed to ensure that all Municipalities perform basic responsibilities and functions without compromise. This can be witnessed by the improved performance report as attached

This programme is built on 5 Pillars:

- Putting people and their concern first.
- Demonstrating good governance and administration.
- Delivering Municipal services.
- Sound financial management and accounting.
- Sound institutional and administrative capabilities.

During the year under review, the Municipality identified the following key priorities:

- ✓ Enhancing the support to the Political offices
- ✓ Strengthening Support to the well-being of Municipal Workforce
- ✓ Supporting the financial internal control
- ✓ Implementing key financial management controls.
- ✓ Finalizing the cost-centered organizational structure
- ✓ Implementing the performance management system.

- ✓ Improving the audit outcome for the year under review

To this end the Municipality was able to implement the customer complain system in responding to community queries, though there is still a need to improve in this area of work.

A programme in supporting worker`s well-being was developed and the following activities were successfully launched:

- Medical surveillance
- Personal Financial Support programme.
- Rehabilitation programme.

In an endeavour to achieve an improved audit outcome, the Municipality focused on the following areas or activities for the year under review:

- Compilation of a GRAP complaint asset register
- Dedicated unit managing Assets.
- Support to the functionality of the Municipal Public Accounts committee
- Improved record and information management
- Capacitation and improvement programme for financial interns

Management wishes to express its gratitude and appreciation for the support from all officials for the compilation of this Annual Report and looking forward to better it in the outer year.

SITUATIONAL ANALYSIS

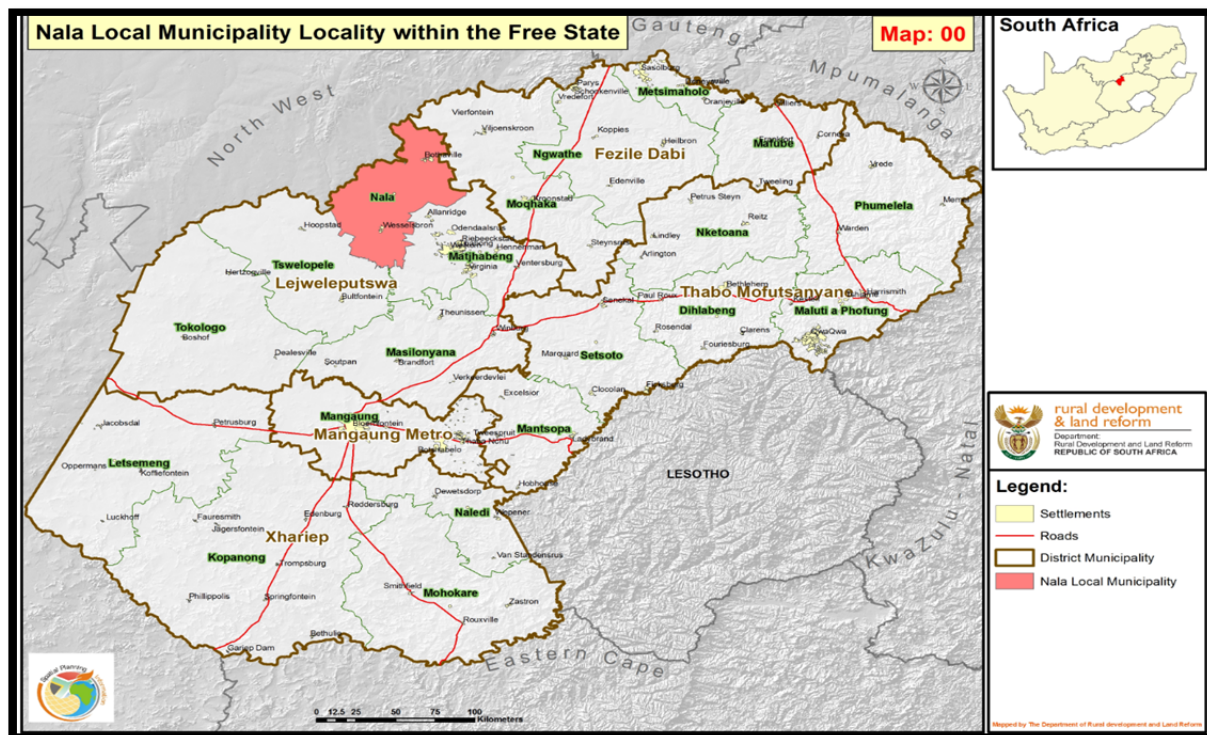
The Nala area is located within a significant agricultural region. It forms part to the so-called “maize-triangle” of South Africa. Bothaville is strategically located close to the gold mining towns of Klerksdorp/Orkney, whilst Wesselsbron is in close proximity of Welkom/Odendaalsrus and are directly dependent on these large urban centers for commercial support (Nala, IDP 2011/2012).

1. Geographical Context

The location of the Municipality is summarized as follow:

MAP 1 : INDICATING NALA LOCAL MUNICIPALITY WITH IN THE SOUTH AFRICAN NATIONAL CONTEXT.

MAP 2 : INDICATING NALA LOCAL MUNICIPALITY WITHIN A PROVINCIAL CONTEXT.



Map 3 : Indicating Nala Local Municipality within a District Context.

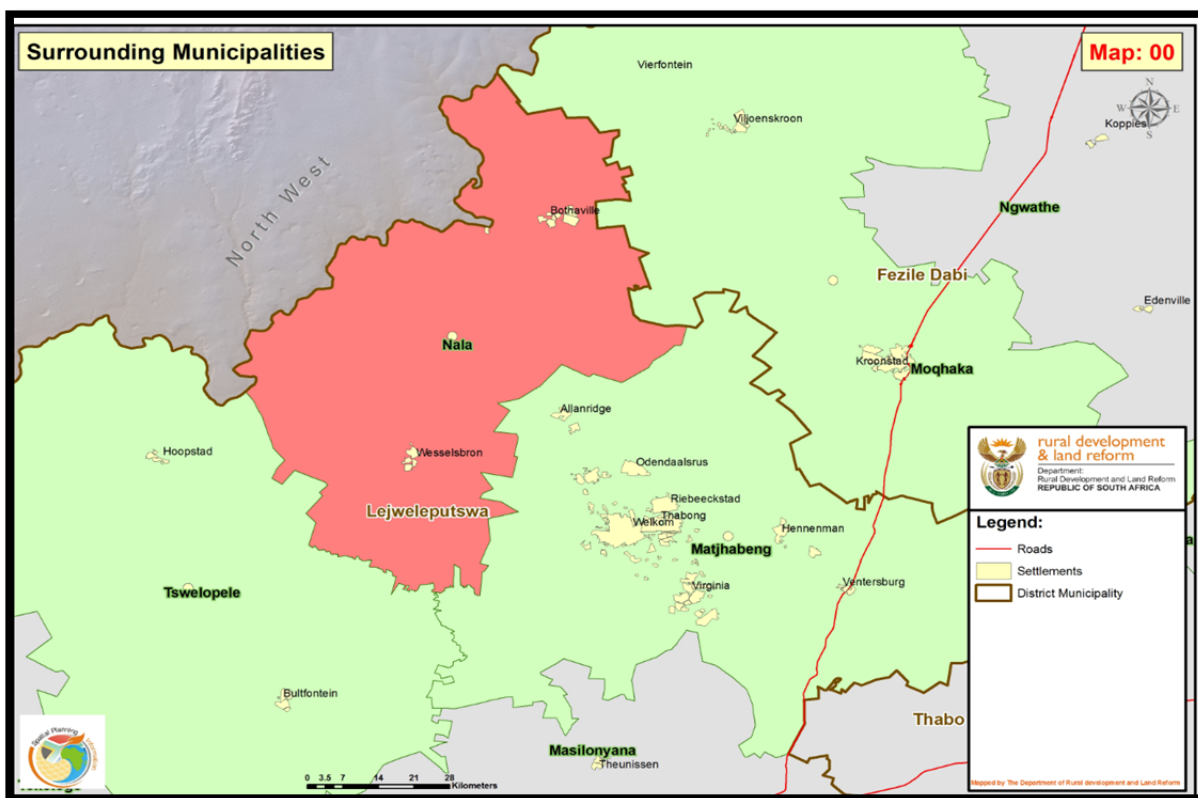


TABLE 1: GEOGRAPHIC SUMMARY OF NALA LOCAL MUNICIPALITY

Geographic area	Population size and households			Population and household density
Nala Local Municipality area of jurisdiction covers 4,135 km ² . The municipality is therefore is geographically the smallest of all local municipalities in the district.	Population size			The municipality is also the second densest populated local municipal area in the district of 32 i.e. people/km ² after Matjhabeng LM.
	2001	CS 2007	2011	
	98 264	92 585	81 219	
	Number of Households			Nala LM has a household density of 9 i.e. people/km ² according to Quantec Research (Urban-Econ, 2008). Nala LM household density is higher than the Free State Province i.e. 6 people/km ² and Lejweleputswa District i.e. 7 people/km ² .
	According to Statistics South Africa: Community Surveys, there were a total number of 21 703 households within the area of jurisdiction of Nala Local Municipality.			

Source: Statistics South Africa - Statistics South Africa 2001 - 2011

A comparative analysis of the 2001 to 2011 Statistics displays our municipality as not growing faster in terms of population and household's numbers showing a decline of 9% and 10% respectively.

This situation may be a result of myriad of factors such as migration of local residents to other provinces or within the province due to work or education, increasing mortality rates due to HIV/AIDS, and unemployment causing a decline in the purchasing of new property. Equally important is lack of visible economic growth which may generally account for non-growth of population and household numbers. It is possible that some of these factors, except HIV/AIDS, will continue depressing population and household growth in the area.

s

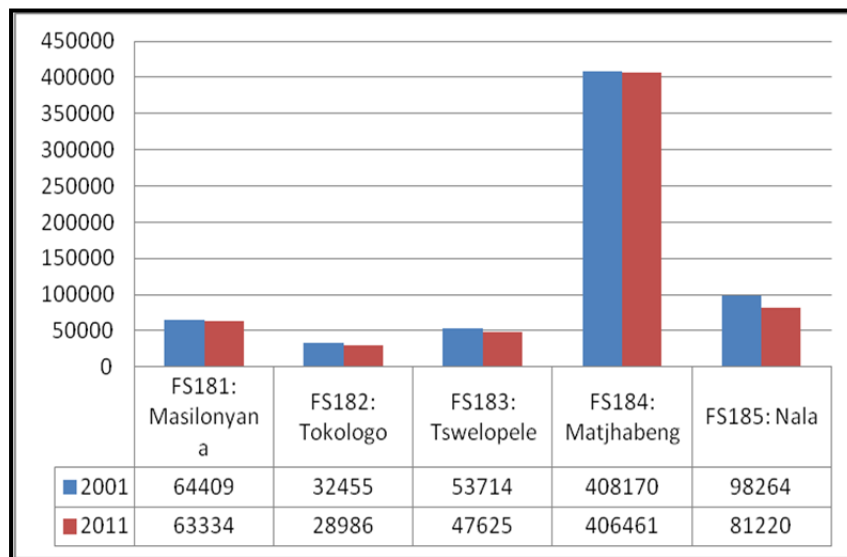


Figure 1: Total population size in Lejweleputswa Local municipalities

Source: Statistics South Africa, 2011

According to the table above, Nala had a population size of 98264 in 2001. This figure decreased by 17044 in 2011 to 81220. Negative population growth was not only a unique feature of Nala's demographic patterns between 2001 and 2011, but a common situation across all municipalities in Lejweleputswa. Factors that could be attributed to this occurrence are among others; migration of people to other districts in the province or to other provinces due to collapse of mining sector in Welkom and other surrounding towns, migration to other districts and provinces for educational needs. HIV/AIDS could also account for negative population growth, particularly prior to introduction of ARV treatment regime.

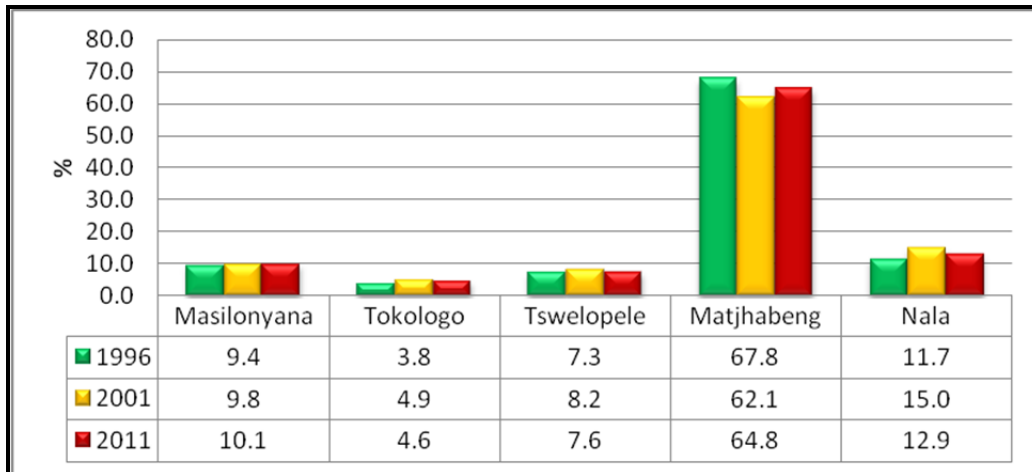
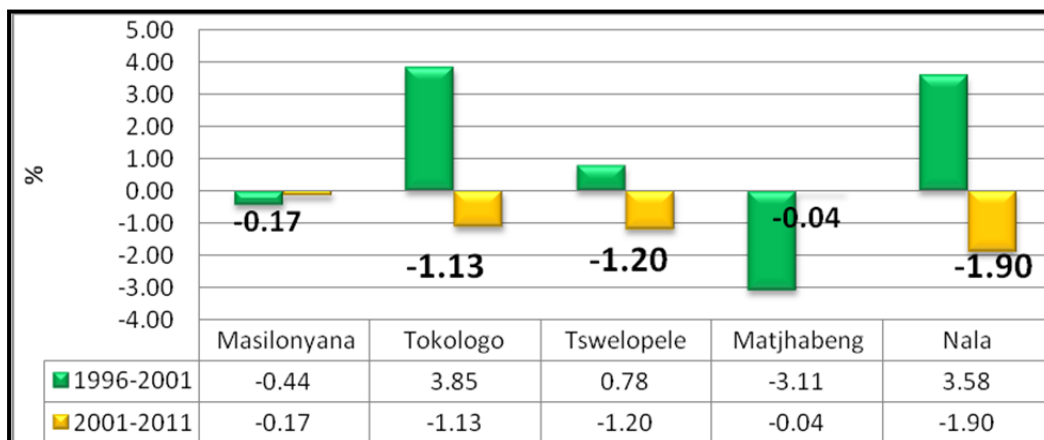


Figure 2: Percentage distribution of population sizes of Lejweleputswa Local Municipalities
Source: Statistics South Africa, 1996, 2001, 2011

The above bar graph depicts population sizes of all municipalities in Lejweleputswa. According to this graph, Nala trails second behind Matjhabeng in terms of population size, at 11.7% in 1996. Between 1996 and 2001, population size in Nala grew by 3.3% to 15%. Between 2001 and 2011 there was a slight negative growth of -2.1% from 15% to 12.9% respectively.

FIGURE 3: POPULATION GROWTH RATES OF LEJWELEPUTSWA BY LOCAL MUNICIPALITIES



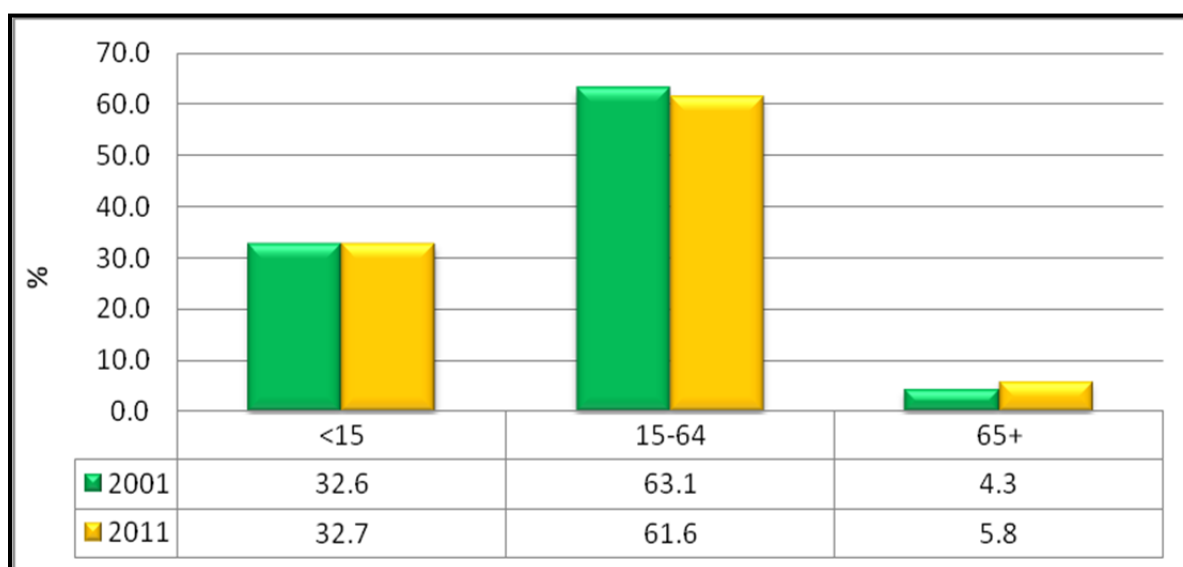
Source: Statistics South Africa, 1996, 2011

The above graph shows population growth rates in all the municipalities of Lejweleputswa. In terms of the figures, Nala trails second behind Tokologo between 1996 and 2001, at 3.58%. Between 2001 and 2011, Nala registered the highest negative growth rate of -1.90% in Lejweleputswa, followed by Tswelopele and Tokologo at -1.20% and -1.13% respectively. Between 2001 and 2011 all municipalities in Lejweleputswa had registered negative population

growth rates, suggesting that the entire district lost population due to either migration to other provinces as the mining sector in Welkom collapses or due to HIV/AIDS.

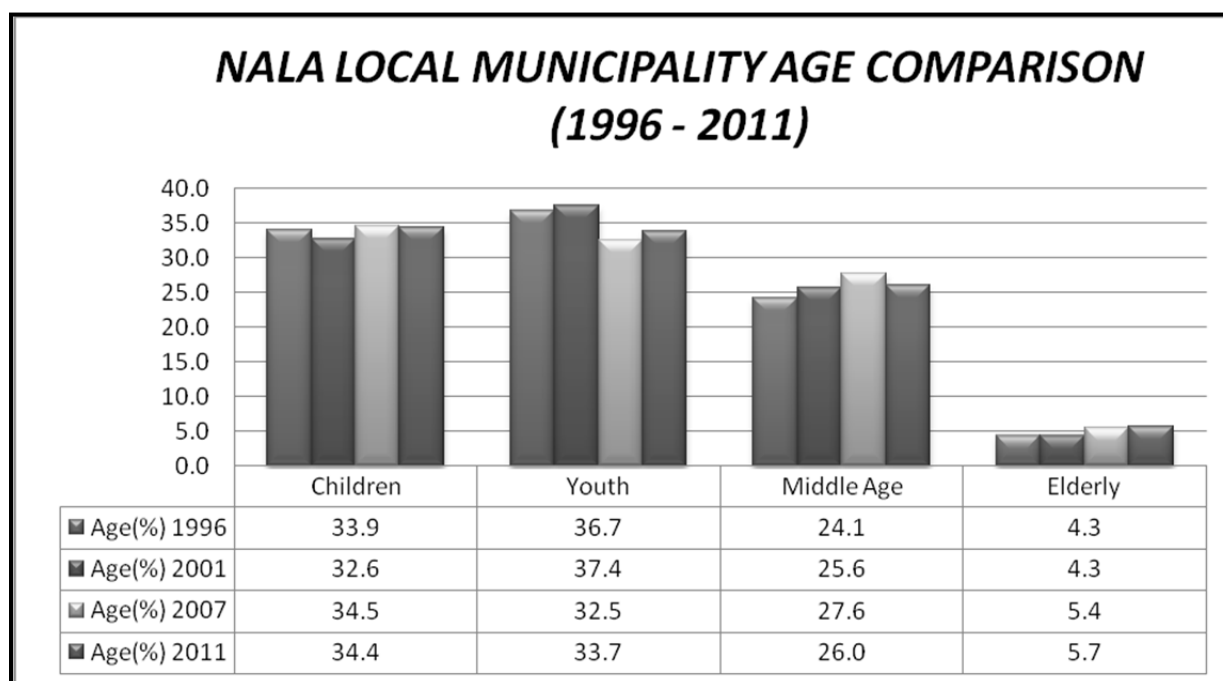
The following graphs show population distribution of Nala by age. Between 2001 and 2011, there was a slight change in population distribution of 0.01%. Between these years percentage population distribution of children less than fifteen years (< 15) was 32.6% and 32.7% respectively. This scenario suggests that future planning should focus on developing ECDC programmes and building of extra classrooms for primary and intermediate learners. In the age category of 15-64 years of age, registered percentage population distribution in Nala was 63.1% in 2001 and 61.6% in 2011, showing a negative growth of -1.5%. In the age category of 65+ years, a positive growth of 1.5% was registered from 4.3% to 5.8%.

FIGURE 4 NALA POPULATION DISTRIBUTION



Source: Statistics South Africa, 2001, 2011

FIGURE 5: NALA LOCAL MUNICIPALITY AGE COMPARISON



Source: Statistics South Africa - Census Statistics 2011

As depicted on the table hereunder, a further breakdown of the STATS SA 2011 Census reveals that 93.1% of the population is Black, 0,6% Coloured, 0,2% Indian and 5.9% White with the reminder of other population groups being at 0.2%. In terms of gender demographics, males comprise 47.8% of the population whilst females 52.1% of the population of Nala.

TABLE 2: POPULATION ETHNICITY

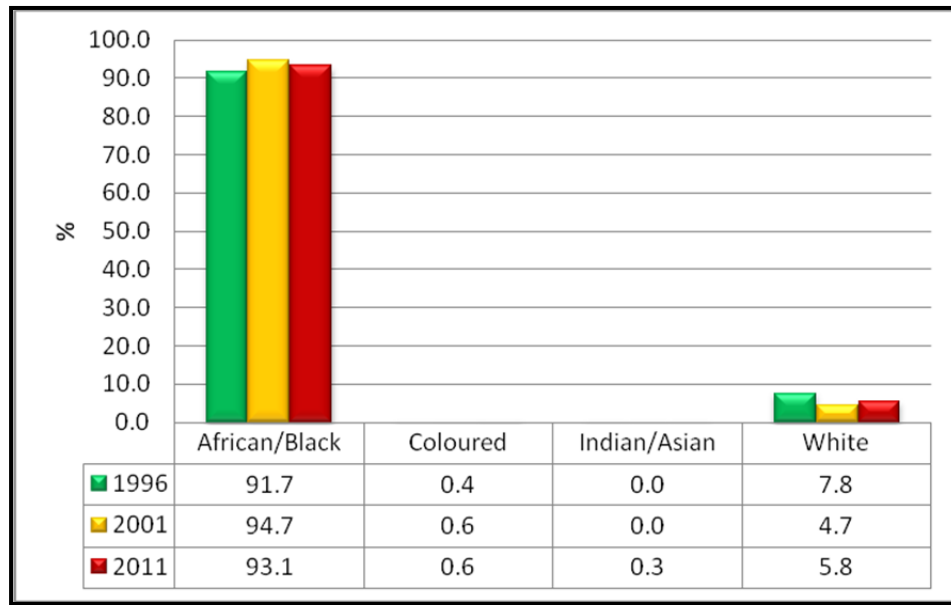
Population Group	Total	Percentage
Black	75651	93.1%
Colored	501	0.6%
Indian or Asian	207	0.2%
White	4679	5.9%
Other	180	0.2%
Total	92 582	100.00%

Source: Statistics South Africa - Census Statistics 2011

According to the figure below, there were more Africans/Blacks in Nala than any other racial groups in 1996, at a figure of 91.7% whilst other racial groups share the difference. This figure has increased by 3% between 1996 and 2001 to 94.7%. Between 2001 and 2011, a negative growth of -1.6% was registered. Colored's have increased by 0.2% between 1996 and 2011.

Indians/Asians have increased from 0% in 1996 to 0.3% in 2011. Whites have shown a negative growth of -3.1% between 1996 and 2001. In 2011 a positive growth rates of 1.1% was registered for whites in Nala. This picture suggests that any future planning in Nala should be biased towards Africans.

FIGURE 6: NALA POPULATION ETHNICITY



Source: Statistics South Africa, 1996, 2001, 2011

CHAPTER 2

POLITICAL AND ADMINISTRATIVE GOVERNANCE

Introduction to Governance

According to Chapter 7 of the Constitution of the Republic of South Africa, local sphere of government consists of municipalities, whose executive and legislative authority is vested in its Municipal Council. In carrying out its mandate, to govern on its own initiative, the local affairs of its community, the municipality must ensure consistent compliance with applicable national and provincial legislations. The Constitution of the Republic of South Africa specifically section 152 (ss. 1) enjoins and vest the following developmental mandates on municipalities. These are;

1. To provide democratic and accountable government for the local communities.
2. To ensure provision of services to communities in a sustainable manner.
3. Promote social and economic development.
4. To promote safe and healthy environment for local communities and,
5. To encourage public and community participation in matters of local government.

Nala Local Municipality has both political as well as administrative structures. The political structure consists of the entire municipal council and Executive Council (EXCO). The administrative structure in turn is embodiment of all municipal employees, with the Municipal Manager serving as head of administration. The senior management consists of three section 56 managers appointed on fixed contractual agreement, who also serve as heads of various departments in the municipality.

POLITICAL GOVERNANCE

1. Municipal Council

The municipal council is the highest decision making body which constitute of twenty four (24) PR and ward councillors from different political parties. The mayor and the speaker also form part of this council and are both full time political office bearers.

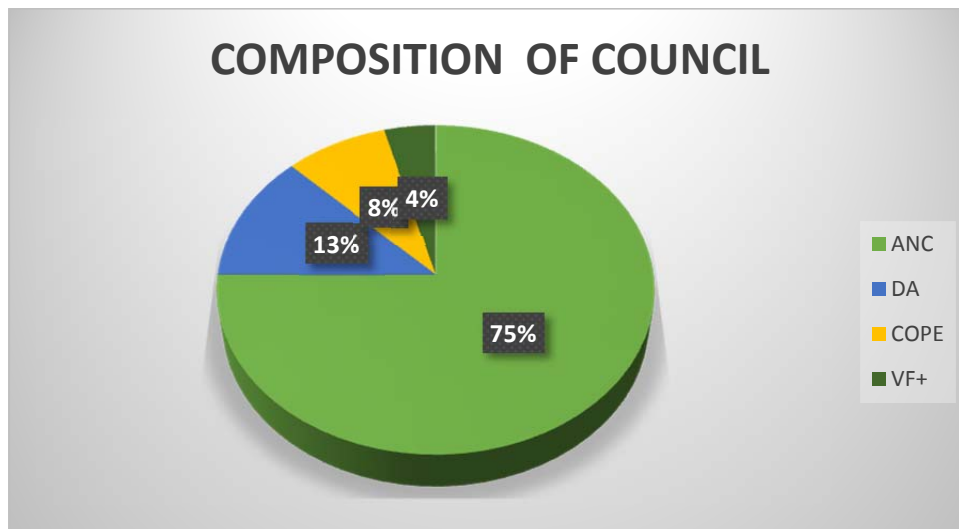


FIGURE 7: COMPOSITION OF COUNCIL

2. Executive Council (EXCO)

The EXCO members are appointed by the mayor as political heads of various departments and section 79 committees. Nala Local Municipality is collective municipality whose powers are separated between the speaker as Chairperson of Council and under which various ward committees report through ward councillors.

The Mayor in turn executes his/her duties as political head of the entire municipal administration. The Mayor as custodian of municipal finance is also responsible for chairpersonship of EXCO, whilst the council is the overall decision-making body to which the EXCO reports progress on identified programmes. The Nala Local Municipality's EXCO consisted of the following members as at the end of the period under review:

POLITICAL STRUCTURE:

NAMES	FUNCTION
MAYOR (Cllr Theko Mogoje)	Political Head of the Institution Chairperson of EXCO
SPEAKER (Cllr Nozililo Mashiya-Hlathi)	Leader of Council: Chairperson of Council

EXECUTIVE COMMITTEE MEMBERS:

NAMES	POSITION
Mayor: TA Mogoje	Chairperson of EXCO
Cllr Motsoeneng	Corporate Services
Cllr Masisi	Engineering Services and Human Settlements
Cllr Mpesi	Finance and Local Economic Development
Cllr Botma	Member

MUNICIPAL PUBLIC ACCOUNTS COMMITTEE:

NAMES	POSITION
Cllr Mamatela	Chairperson of the MPAC
Cllr Mokolutlo	Member
Cllr Maas	Member
Cllr Moshane	Member
Cllr Leburu	Member

SECTION 79 COMMITTEES

ENGINEERING SERVICES AND HUMAN SETTLEMENTS:

	POSITION
Cllr Masisi	Chairperson
Cllr Mohloare	Member
Cllr Mabeleng	Member
Cllr Ramaele	Member
Cllr Radebe	Member

FINANCE AND LOCAL ECONOMIC DEVELOPMENT:

NAMES	POSITION
Cllr Mpesi	Chairperson
Cllr Botma	Member
Cllr Monare	Member
Cllr Moses	Member
Cllr Segalo	Member
Cllr Tutubala	Member

CORPORATE SERVICES AND HUMAN RESOURCES:

NAMES	POSITION
Cllr Motsoeneng	Chairperson
Cllr Bopiko	Member
Cllr Molutsi	Member
Cllr Niewoudts	Member
Cllr Moepi	Member
Cllr Ncheche	

AUDIT COMMITTEE:

NAME	POSITION
Mr Vermalen	Acting Chairperson
Adv Lubbe	Member
Ms Nteo	Member
Mr Moduane	Member

COUNCILLORS

NAME AND SURNAME	ORG	WARD
Cllr M Segalo	ANC	Ward 1
Cllr M Ncheche	ANC	Ward 2
Cllr R Bopiko	ANC	Ward 3
Cllr B Mabeleng	ANC	Ward 4
Cllr J Mamatela	ANC	Ward 5
Cllr M Marumole	ANC	Ward 6
Cllr M Tutubala	ANC	Ward 7
Cllr R Ramaele	ANC	Ward 8
Cllr T Mohloare	ANC	Ward 9
Cllr M Moshane	ANC	Ward 10
Cllr P Moepi	ANC	Ward 11
Cllr J Botma	DA	Ward 12

POLITICAL DECISION-TAKING

The Council of Nala Local Municipality is a Collection Executive System and consists of the Council which is the highest decision making body and it meets monthly whereas the Act determines Council to meet at least once a quarter. Amongst the critical issues delegated to Council to consider and approve are:

- ✓ Annual Budget and Budget related policies.
- ✓ Integrated Development Plan (IDP)
- ✓ Policies
- ✓ Disposal of Assets
- ✓ Land

The Executive Committee also meets once a month to consider day-to-day administrative issues. Amongst others:

- ✓ Municipal Manager's report
- ✓ Budget (Financial) Reports

SENIOR MANAGEMENT

NAME	POSITION	CORE FUNCTIONS
BC Mekomela	Municipal Manager	Strategic leadership and management of the Municipality
BP Molupe	Director Corporate Services	Corporate identity, Human Resource, legal services and support services.
TK Malebane	Director Engineering Services	Infrastructure, operations and maintenance, basic services
S Busakwe	Chief Financial Officer	Financial management and compliance.

INTERGOVERNMENTAL RELATION

Nala Local Municipality participated in a number of structures aimed at enhancing Intergovernmental Relations as presented by Chapter 3 of the Constitution of the Republic of South Africa.

These include amongst others; The Provincial Premier's Coordinating Forum, South African Local Government Association, Lejweleputswa District Technical Forum.

During the year under review the Municipality also established a Finance Steering Committee convening weekly to discuss and resolve on all issues relating to finance. This committee consisted of COGTA, Treasury, Auditor General and Senior Officials in the Finance Department.

PUBLIC ACCOUNTABILITY AND PUBLIC PARTICIPATION

OVERVIEW OF PUBLIC ACCOUNTABILITY AND PARTICIPATION

Section 15(b) of the Systems Act requires a municipality to establish and organize its administration to facilitate and inculcate a culture of accountability amongst its staff.

Section 16(i): states that a municipality must develop a system of municipal governance that compliments formal representative governance with a system of participatory governance.

Section 18(i) (d) requires a municipality to supply its community with information concerning Municipal Governance, Management and Development.

The above objectives are achieved by holding Public meetings; Ward meetings; Communication with and through Non-Governmental Organizations and through the use of Community Development Workers. Political leaders of parties represented in Council also give feedback to the community through meetings of those structures.

RISK MANAGEMENT

Section 62 (1) of the MFMA requires a Municipality to have and maintain an effective, efficient and transparent system of Risk Management. As a result the Municipality developed and approved the Anti-fraud and Corruption Policy.

It must be noted that due to lack of capacity and skills in the Internal Audit Unit, the functionality of the Audit Committee had not served its purpose as per legislation.

The Internal audit did not function as requested by section 165(2) and the MFMA in that:

1. It did not report to the audit committee on the implementation of the internal audit plan.
2. It did not advise the accounting officer and report to the audit committee on the matters relating to the internal audit, internal controls, accounting procedures and practices, risk and risk management as well as loss control.
3. The internal audit unit did not advise the accounting officer and report to the audit committee on matters relating to compliance with the MFMA, DoRA and other applicable legislation, as requested by section 165(2)(b)(vii) of the MFMA

The 5 risks within our Municipality that needs urgent attention are the following:

- ✓ Internal Controls
- ✓ Revenue Management
- ✓ Internal Audit and Audit Committee
- ✓ Performance Management
- ✓ IT

WEBSITE

Section 75 of the Municipal Finance Management Acts prescribes that information be placed on the Municipality's website. The Municipal website is still not upgraded to perform this function in totality. An external Service Provider is contracted to manage the Municipal IT System, which is a serious risk.

SERVICE PROVIDER PERFORMANCE

NAME	PROJECT NAME	BUDGET	CONTRACT DURATION	PROJECT STATUS	REMARKS
Thewo Consulting	Kgotsoong: Pedestrian bridges over canals	R 1,700,000	8 months	Continuous	Progress has been slow but improved
Mothapo Consulting	Kgotsoong : Paved Roads Phase 4(b) (2.5km)	R 3,100,000	6 months	Completed	No challenges
Lebogang Katlego & Matriz	Kgotsoong : Paved Roads Phase 4(b) (2.5km)	R 7,700,000	6 months	Completed	No challenges
N M Sekonya Contractors	Kgotsoong : Paved Roads Phase 4(b) (2.5km)	R 7,000,000	6 months	Completed	No challenges
Mothapo Consulting	Monyakeng : Paved Roads Phase 4(b) (2.5km)	R 3,000,000	12 months	Completed	No challenges
Bakgeni Construction	Monyakeng : Paved Roads Phase 4(b) (2.5km)	R 6,200,000	12 months	Completed	Road does not flush out water, Municipality is in possession of retention to correct work.
Bankuna Construction	Monyakeng : Paved Roads Phase 4(b) (2.5km)	R 7,300,000	12 months	Completed	No challenges
Mothapo	Monyakeng/Wesselbron: Instalation of 7 High Mast lights.	R 255,000	10 months	Continuous	No challenges
Sedtrade	Monyakeng/Wesselbron: Instalation of 7 High Mast lights.	R 1,445,000	10 months	Continuous	progress has been slow, but project is complete awaiting wire

					ring
Mothapo	Kgotson/Bothaville: Instalation of 8 High Mast lights.	R 255,000	10 months	Continuous	process has been slow but improved
Sedtrade	Kgotson/Bothaville: Instalation of 8 High Mast lights.	R 1,530,000	10 months	Continuous	Progress has been slow, awaiting Municipality to cast four new foundations because of relocation of sites
Mothapo	Monyakeng/Wessesbro n: Upgrade of Sports Park	R 340,000	2 months	Continuous	Progress good, project is 90% complete
Pro Tech Consultants	Monyakeng: Construction of 2km paved road and storm water drainage - phase 4c	R 860,000	5 months	Completed	Project completed, No challenges
Qophe Construction	Monyakeng: Construction of 2km paved road and storm water drainage - phase 4c	R 6,765,000	5 months	Completed	Project completed, No challenges

CHAPTER 3:

SERVICE DELIVERY PERFORMANCE

Introduction:

Constitution of Republic of South Africa guides Nala Local Municipality in providing services as outlined in Schedule 4 (Part B) and Schedule 5 (Part B) of the Constitution of the Republic of South Africa (Act 108 of 1996)

- Water Services.
- Waste water (sanitation).
- Electricity.
- Waste Management (Refuse removal).
- Facilitation of housing and provision of sites.

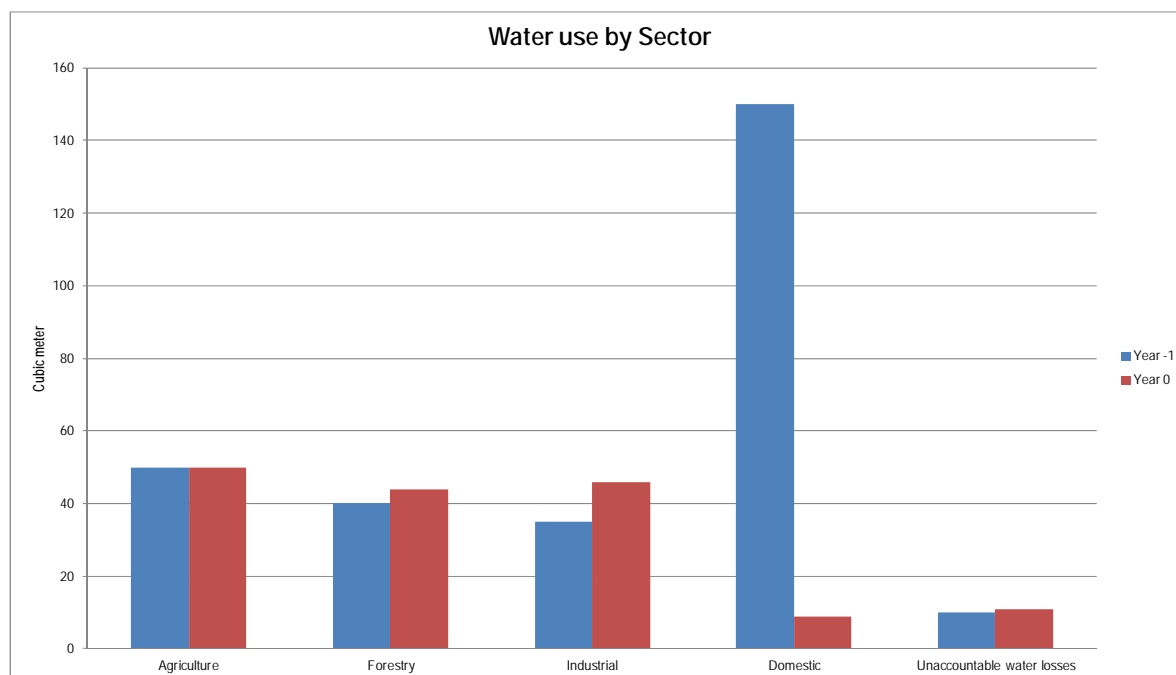
Furthermore the Municipality is also obliged to provide Free basic Services to the Indigents Households within its communities. Council annually approves an indigent policy that regulates the registration of indigent people, for the year under review the Municipality approved the following conditions for the indigent community.

- A threshold of R2200 per Household
- 6kl of free water
- 50 kw free electricity
- 100% subsidy of sanitation
- 100% subsidy of refuse removal

WATER PROVISION

Nala Local Municipality is the retail water service provider and Sedibeng Water is the bulk water service provider. The quality of water provided by the municipality complies with the SABS standard according the Water Service Development. The capacity of the bulk water infrastructure has been improved by the addition of the new water pressure tower and reservoir, which serve as temporary alleviation of the bulk capacity problem in the Kgotsong area. All areas in Nala Local Municipality have adequate water access with no interruptions other than during repairs and serious pipe bursts, more especially during winter this is a result of aging infrastructure.

During the year under review the Municipality achieved 65% of blue drop, these results calls upon the Municipality to put more efforts on the quality of the water in the outer year.



Water Service Delivery Levels				
Description	Year -3	Year -2	Year -1	Households Year 0
	Actual No.	Actual No.	Actual No.	Actual No.
<i>Water: (above min level)</i>				
Piped water inside dwelling	857	546	655	846
Piped water inside yard (but not in dwelling)	647	865	456	486
Using public tap (within 200m from dwelling)	486	486	465	546
Other water supply (within 200m)				
<i>Minimum Service Level and Above sub-total</i>	1,990	1,898	1,576	1,879
<i>Minimum Service Level and Above Percentage</i>	80%	80%	76%	79%
<i>Water: (below min level)</i>				
Using public tap (more than 200m from dwelling)				
Other water supply (more than 200m from dwelling)	486	486	486	486
No water supply				
<i>Below Minimum Service Level sub-total</i>	486	486	486	486
<i>Below Minimum Service Level Percentage</i>	20%	20%	24%	21%
Total number of households*	2,476	2,384	2,062	2,365
<i>* - To include informal settlements</i>				<i>T 3.1.3</i>

JOB LEVELS	NO: OF EMPLOYEES	NO: OF POSTS APPROVED	VACANCIES	VACANCY %
0 – 3				
4 – 6	2	2	0	0%
7 – 9	11	11	0	0%
10 – 12	22	22	0	0%



SANITATION SERVICES

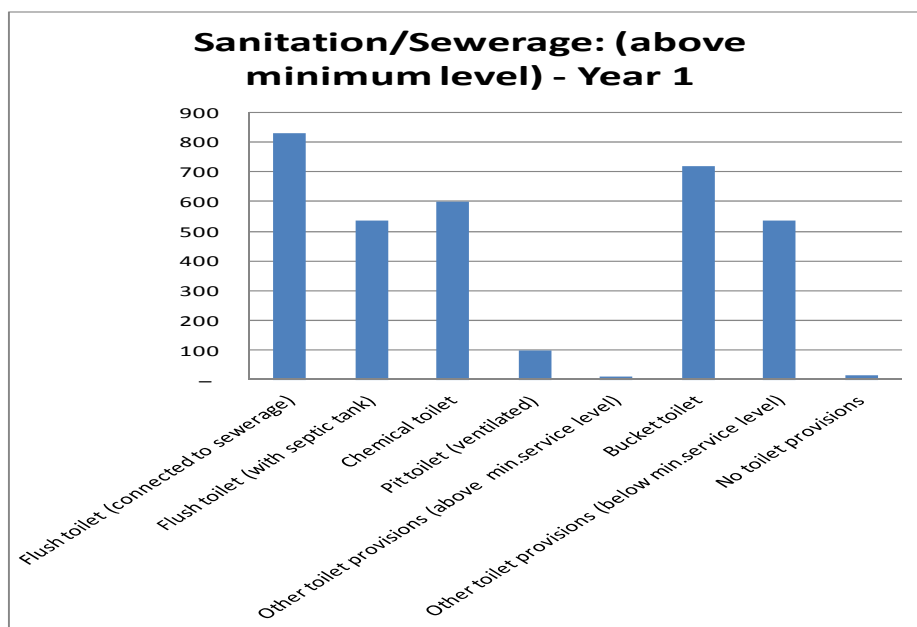
In terms of sanitation services, the immediate priority is to provide the service to all, which meet basic health and functional requirement including the protection of the quality of both surface and underground water. In order to ensure sustainable provision of this service in line with the objective outlined in the earlier paragraph, we have managed to upgrade the Waste Water Treatment Plant (WWTP) in Bothaville and the plant has sufficient capacity.

Similarly, we are aware of the inadequacy challenges of the WWTP in Wesselsbron area and once this challenge is overcome, which will be given priority in the next financial year, over 350 erven in this area which had no access to waterborne sewerage system, will also be connected to the network and be provided with the appropriate level of service.

The Department of Human Settlements, through Bloem water, allocated funding to implement the remedial work on the incomplete toilet connections, correction of main sewer lines, construction of sewer main holes the outfall sewer line and building of outstanding 43 toilet structures.

The remedial work have resulted in the following corrections:

- 4.4 km sewer line
- 2500 toilet connections
- 133 sewer main holes



Sanitation Service Delivery Levels				
Description	*Households			
	Year -3	Year -2	Year -1	Year 0
	Outcome No.	Outcome No.	Outcome No.	Actual No.
<u>Sanitation/sewerage: (above minimum level)</u>				
Flush toilet (connected to sewerage)	942	600	720	930
Flush toilet (with septic tank)	712	952	502	535
Chemical toilet	535	535	511	601
Pit toilet (ventilated)	124	135	103	100
Other toilet provisions (above min.service level)	13	13	15	11
<i>Minimum Service Level and Above sub-total</i>	2,325	2,236	1,851	2,178
<i>Minimum Service Level and Above Percentage</i>	68.9%	59.9%	55.5%	63.1%
<u>Sanitation/sewerage: (below minimum level)</u>				
Bucket toilet	502	952	938	720
Other toilet provisions (below min.service level)	535	535	535	535
No toilet provisions	10	11	12	15
<i>Below Minimum Service Level sub-total</i>	1,047	1,498	1,485	1,271
<i>Below Minimum Service Level Percentage</i>	31.1%	40.1%	44.5%	36.9%
Total households	3,372	3,734	3,336	3,449
<i>*Total number of households including informal settlements</i>				<i>T 3.2.3</i>

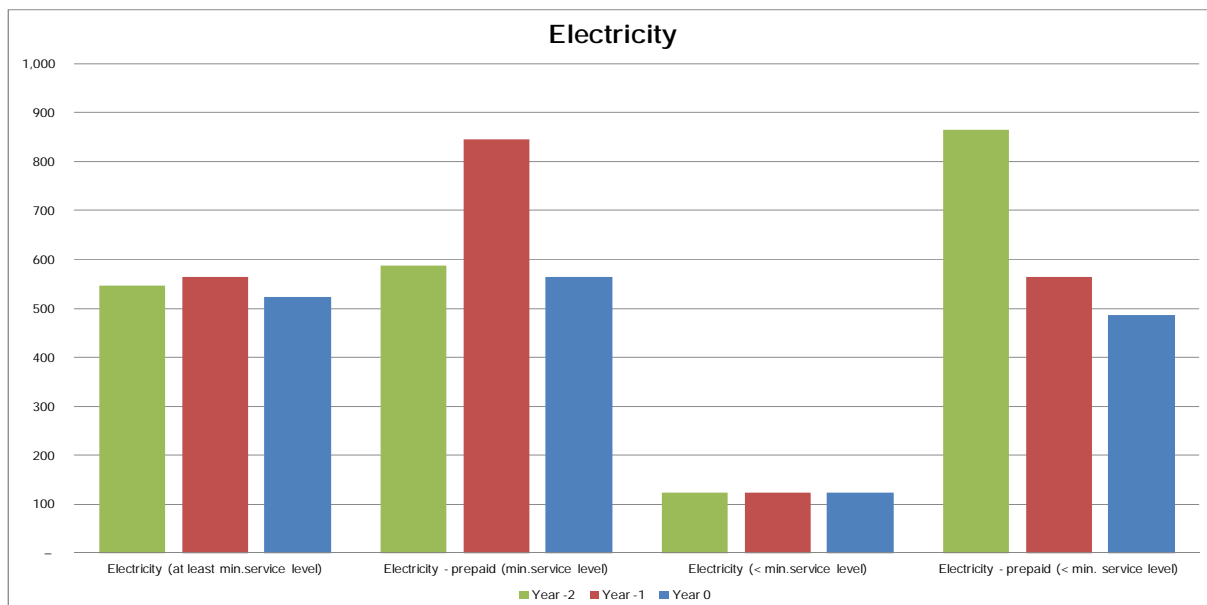
JOB LEVELS	NO: OF EMPLOYEES	NO: OF POSTS APPROVED	VACANCIES	VACANCY %
0 – 3	1	1	0	0%
4 – 6	5	5	0	0%
7 – 9	1	4	3	75%
10 – 12	48	48	0	0%





ELECTRICITY

In terms of electricity provision, Eskom is the service provider in the rural areas as well as in Monyakeng. Nala Local Municipality is services provider within Bothaville and Wesselsbron. The levels of service of Electricity supply are according to the “Guidelines for the provision of engineering services in residential areas as defined by the red Book (Guidelines for Human Settlements, Planning and Design Volume II) published by the Department of Housing.



Electricity Service Delivery Levels				
Description	Year -3	Year -2	Year -1	Households Year 0
	Actual No.	Actual No.	Actual No.	Actual No.
<u>Energy: (above minimum level)</u>				
Electricity (at least min.service level)	655	547	565	523
Electricity - prepaid (min.service level)	565	587	846	565
<i>Minimum Service Level and Above sub-total</i>	1,220	1,134	1,411	1,088
<i>Minimum Service Level and Above Percentage</i>	52.8%	52.8%	66.3%	62.1%
<u>Energy: (below minimum level)</u>				
Electricity (< min.service level)	112	123	124	124
Electricity - prepaid (< min. service level)	955	865	565	487
Other energy sources	24	26	28	54
<i>Below Minimum Service Level sub-total</i>	1,091	1,014	717	664
<i>Below Minimum Service Level Percentage</i>	47.2%	47.2%	33.7%	37.9%
Total number of households	2,310	2,147	2,127	1,753
				<i>T 3.3.3</i>

B

JOB LEVELS	NO: OF EMPLOYEES	NO: OF POSTS APPROVED	VACANCIES	VACANCY %
0 – 3	3	3	0	0%
4 – 6	2	2	0	0%
7 – 9	8	8	0	0%
10 – 12	12	12	0	0%



ROADS AND STORM WATER

The majority of roads in Nala Local Municipality are dominated by tar and gravel roads (especially in the townships)

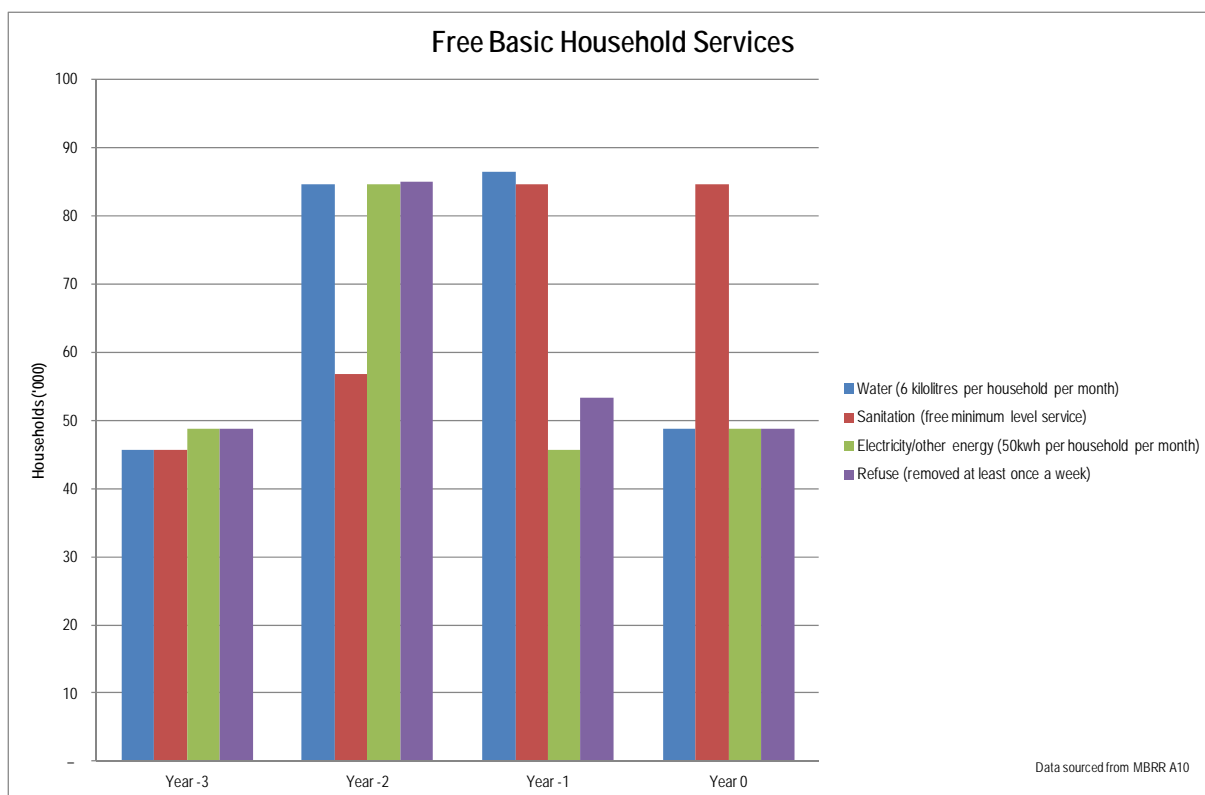
The Municipality is currently implementing a strategy of paving streets through the Municipal Infrastructure Grant, whereas in the other tarred roads, maintenance is done through filling of potholes using internal capacity and own funding.

Due to financial constraints the Municipality is unable to purchase new fleet in order to maintain gravel roads through filling and grading

JOB LEVELS	NO: OF EMPLOYEES	NO: OF POSTS APPROVED	VACANCIES	PERCENTAGE
0 – 3	1	1	0	0%
4 – 6	1	1	0	0%
7 – 9	9	10	1	10%
10 – 12	25	25	0	0%

Percentage of households with access to basic housing			
Year end	Total households (including in formal and informal settlements)	Households in formal settlements	Percentage of HHs in formal settlements
Year -3	560000	350000	62.5%
Year -2	654000	450000	68.8%
Year -1	654000	500000	76.5%
Year 0	684000	540000	78.9%
<i>T 3.5.2</i>			





Job levels	No: of Employees	No: of posts approved	Vacancies	Vacancy %
0 – 3	2	2	0	0%
4 – 6	5	5	0	0%
7 – 9	11	11	0	0%
10 – 12	4	8	4	50%

PARKS AND CEMETERIES

Job levels	No: of Employees	No: of posts approved	Vacancies	Vacancy %
0 – 3	0	0	0	0%
4 – 6	1	1	0	0%
7 – 9	6	6	0	0%
10 – 12	37	37	0	0%



PLANNING AND DEVELOPMENT

Purpose

The aim of the report is to inform and report to the Municipal Manager and Director Technical Services on the progress of the Building Control Unit.

Background

As time goes by our infrastructure ages and it poses a challenge to the local authority which then requires main.

Key Performance Areas

This Division deals with the following:

- Building Plan Approval
- Contravention Notice,
- Occupation Certificate

BUILDING CONTROL

DETAIL	BUILDING CONTROL
Building Plan Application received	69
Approved	60
Disapproved	9
Contravention Notice	2
Occupation Certificate	0

PLANNING AND DEVELOPMENT

DETAILS	TOTAL	APPROVED	DIFFERED BACK
WAYLEAVE APPLICATION	3	3	0
LAND APPLICATION	13	4	9
LAND USE APPLICATION	10	5	5
TOWNSHIP ESTABLISHMENT	1	STATUS 50%	

CONDITIONAL GRANT REPORT (MIG)

INTRODUCTION

This is 2014/15 financial year report pertaining to conditional grant (MIG)

The objective of the evaluation report is to highlight and clarify annual expenditure for 2014/15 versus the budget of 2014/15

BACKGROUND

A. OVERALL DESCRIPTION OF THE PROGRAMME

- **PROGRAMME HISTORY**

No	Project Description	Project Scope	Project Place and town	Project Status
1	Kgotsong: Multi-Purpose Centre	Construction of the multipurpose hall, exhibition area, office area and ablution facilities	Bothaville / Kgotsong	completed
2	Kgotsong: Paved Roads Phase 1 (2km)	Construction of 2km road and storm water	Bothaville / Kgotsong	completed
4	Kgotsong: Bucket Eradication Phase 4 (570 toilets)	Connecting of 570 toilets to the	Bothaville / Kgotsong	completed
5	Kgotsong Paved Roads Phase 2 (3.2km)	Construction of 3.2km paved road and storm water	Bothaville / Kgotsong	completed
6	Kgotsong Landfill site fencing	Construction of a 1.5Km concrete palisade and associated facilities	Bothaville / Kgotsong	completed

7	Kgotsong Cemetery Fencing	Construction of 1.5km Concrete palisade and ablution facilities	Bothaville / Kgotsong	completed
8	Kgotsong New Cemetery Road	Construction of 1.5km paved roads and storm water	Bothaville / Kgotsong	completed
10	Kgotsong Electrification project Ph1 (250 House Holds)	Installation of 250 infills connections	Bothaville / Kgotsong	completed
11	Kgotsong Electrification Project Phase 2 (120 House Holds)	Installation of 120 infill connections	Bothaville / Kgotsong	completed
10	Kgotosng Paved Roads Phase3 (3.3km)	Construction of 3.3km paved roads and storm water.	Bothaville / Kgotsong	completed
12	Kgotsong Sports Complex Phase 1	Refurbishment of tennis courts, Vip area, change rooms, ablution facilities and construction of parking area.	Bothaville / Kgotsong	completed
13	Kgotsong Two Tennis Courts and Ablution Facilities	Construction of two tennis courts and ablution facilities	Bothaville / Kgotsong	completed
14	Kgotosng Paved Roads Phase 4 (2km)	Construction of 2km paved roads and storm water	Bothaville / Kgotsong	completed
15	Kgotosng Pave roads Phase 4c (1.5km)	Construction of 1.5km paved roads and storm water	Bothaville / Kgotsong	completed
16	Kgotsong Paved roads Phase 4a (2.2km)	Construction of 2.2km paved roads and storm water	Bothaville / Kgotsong	completed
17	Kgotosng Bulk Electrification: MV and HT lines in Kgotsong	Construction of 1.2km HT line and 0.5km MV lines	Bothaville / Kgotsong	completed
18	Kgotsong Bulk Electrification: Bothaville Substation	Upgrading of the Bothaville Substation.	Bothaville / Kgotsong	completed
19	Kgotosng Paved roads Phase 4B (2.5km)	Construction of the 2.5km paved road and associated storm water.	Bothaville / Kgotsong	completed
12	Monyakeng Paved Roads Ph1 (1Km)	Construction of the 1km paved road and associated storm water.	Monyakeng / Wesselsbron	completed

20	Monyakeng Paved roads phase 2 (3.2km)	Construction of the 3.2km paved road and associated storm water.	Monyakeng / Wesselsbron	completed
21	Monyakeng Multi-Purpose Centre	Construction of the multipurpose hall, exhibition area, office area and ablution facilities.	Monyakeng / Wesselsbron	completed
22	Monyakeng Landfill site and associated	Construction of a 1.5km concrete Palisade and associated facilities	Monyakeng / Wesselsbron	completed
23	Monyakeng paved roads Ph3 (3.3km)	Construction of the 3.3km paved road and associated storm water.	Monyakeng / Wesselsbron	completed
24	Monyakeng Paved roads Phase 4 (2.1km)	Construction of the 2.1km paved road and associated storm water.	Monyakeng / Wesselsbron	completed
25	Monyakeng Phase 4a (2.2km)	Construction of the 2.2km paved road and associated storm water.	Monyakeng / Wesselsbron	completed
26	Monyakeng paved roads Ph4b (2.5km)	Construction of the 2.5km paved road and associated storm water.	Monyakeng / Wesselsbron	completed
27	Monyakeng Cemetery fencing and ablution	Construction of 1.5km concrete palisade fencing and ablution facilities.	Monyakeng / Wesselsbron	completed
28	Monyakeng Recreational Park	Construction of 1km steel palisade fence, outdoor gym, play equipment, car wash bay, ablution and storage facility.	Monyakeng / Wesselsbron	completed
29	Monyakeng Rapid Bucket Eradication	Correction work of 3200 HH sewer to the mainline, and construction of km of mail line and correction of 5km main line.	Monyakeng / Wesselsbron	completed

PROJECT CONCEPT, DURATION AND STATUS AS OF 30 JUNE 2014

Financial Year	2010/11	2011/12	2012/13	2014/15
Approved Budget Amount	R37 776 340.48	R45 642 000.00	R55 396 999.68	R52 565 000
Amount Spent	R33 923 837.82	R27 723 504.62	R55 396 999.68	R52 565 000
Roll over	R3 852 502.66	R17 000 000.00	R0	R0

CHAPTER 4:

ORGANIZATIONAL DEVELOPMENT PERFORMANCE

4.1. Introduction:

Nala Local Municipality is dedicated towards the objectives of Local Government as outline in Chapter 7 of the Constitution of South Africa of 1996 (Act 108 of 1996)

- To promote democratic and accountable government for Local Communities.
 - To ensure the provision of services to communities in a sustainable manner.
 - To promote Social and Economic Development.
 - To provide a safe and healthy environment.
- To encourage the involvement of communities and community based organization in matters of Local Government.

During the 2011/12 Financial Year National Treasury invoke Section 216 of the Constitution of the Republic of South Africa.

Amongst the reasons raised by the National Treasury was the top heavy organizational structure. The instruction was then to review the organizational structure.

Through the support of the Department of Cooperative Governance and Traditional Affairs, a new structure was developed and submitted to council for approval.

It must be noted that the following challenges still exist with regard to the organizational structure and the workforce.

- Staff disparity.
- Lack of skill.
- Training and capacity building .
- Post evaluation on the structure.
- Not all workers are allocated on relevant cost centers.

4.2. EMPLOYEE TOTALS, TURNOVER AND VACANCIES:

DESCRIPTION	EMPLOYEE NO:	APPROVED POSTS	VACANCIES	VACANCY RATE
Water and Sanitation	110	110	0	0%
Electricity	36	24	5	-21%
Waste Management	57	57	0	0%
Roads and Storm water	35	37	9	-24%
HR	3	13	9	69%
Local Economic Development	3	6	3	50%
Financial	52	54	02	96%
Traffic and Disaster Management	11	13	2	15%
Internal Audit and Risk Management	3	6	3	50%
Support Services	32	30	7	23%
Performance Management	1	3	2	60%
ICT	0	4	0	100%
Planning, Property and Land Management	06	17	9	53%
Human Settlements	11	11	0	0%
Security	47	50	0	0%
Parks and Cemeteries	49	86	46	53%
Artisans	09	0	0	0%
TOTAL	516	581	65	12.5

4.3 SKILLS DEVELOPMENT AND TRAINING

TYPE OF LEARNINGS	NAME OF TRAINING INTERVENTIONS	GENDER		TOTAL NUMBER OF BENEFICIERIES
		M	F	
LEARNERSHIP	MFMP	05	05	10
LEARNERSHIP	WORK INTERGRATED LEARNING	15	10	25
LEARNERSHIP	WATER WASTE WATER TREATMENT PLANT	19	-----	19
LEARNERSHIP	ODETDP	01	02	03
LEARNERSHIP MASHALABA	YOUTH ENVIROMENTAL PRACTICE	14	16	30
LEARNERSHIP	FIRE AND RESCUE	04	02	06
RPL	WATER WASTE & WATER TREATMENT PLANT	05	-----	05
AET	Mother Tongue, Maths Level 1, English Level 2	22	06	28
IN-SERVICE TRAINING	CIVIL ENGINEERING	01	01	02
IN-SERVICE TRAINING	ELECTRICAL ENGINEERING	02	02	04

4.4 LEAVE

TYPE	NORMAL LEAVE	SPECIAL LEAVE	SICK LEAVE	MATERNITY
DAYS	782	78	782	563

4.5 EMPLOYEES` TURNOVER

TYPE	MALE	FEMALE	TOTAL
RESIGNED	02	02	04
DECEASED	09	00	09
PENSION	14	00	14
DISMISSED	02	01	03

4.6 DISCIPLINARY ACTION TAKEN ON CASES OF OTHER MISCONDUCT:

POSITION	NATURE OF ALLEGED MISCONDUCT	DISCIPLINARY ACTION TAKEN	DATE FINALIZED
General Worker	Misuse of Council Assets, unauthorised gatherings.	Dismissal	31 March 2015
General Worker	Misuse of Council Assets, recommendations of `KPMG`	Dismissal	03 September 2014
Finance Administrator	Fraud	Dismissal	30 September 2014

4.7 HR POLICIES AND PLANS:

HR Policies and Plans				
	Name of Policy	Completed	Reviewed	Date adopted by council or comment on failure to adopt
1	Affirmative Action	✓	✓	27 June 2013
2	Attraction and Retention	X	✓	27 June 2013
3	Code of conduct for employees	✓	✓	
4	Delegations, Authorisation and Responsibility	X		Was last adopted in 28 September 2008, and needs to be reviewed.
5	Disciplinary Code and Procedures	✓	✓	Bargaining Council
6	Essential Services	✓	✓	Still in bargaining process
7	Employee Assistance and Wellness	✓	✓	#
8	Employment Equity	✓	✓	27 June 2013
9	Exit Management	X		
10	Grievance Procedures	✓	✓	Main Collective Agreement.
11	HIV/Aids	X		
12	Human Resource and Development	✓	✓	27 June 2013
13	Information and Technology	X		
14	Job Evaluation	✓	✓	SALGA
15	Leave	✓	✓	27 June 2013
16	Occupational Health and Safety	✓	✓	27 June 2013
17	Official Housing	✓	✓	HUMAN SETTLEMENTS

18	Official Journeys	✓	✓	
19	Official Transport to attend Funerals	X		
20	Official working hours	✓	✓	27 June 2013
21	Organisational Rights	✓	✓	Main Collective Agreement
22	Payroll Deductions	✓	✓	Statutory requirements/Legislation
23	Performance Management and Development	✓	✓	Was last adopted in 2006 and still needs to be reviewed.
24	Recruitment, Selection and Appointments	✓	✓	27 June 2013
25	Remuneration Scales and Allowances	✓	✓	Bargaining Council Agreement, Public Office Bearers Act
26	Resettlement	✓	✓	
27	Sexual harassment	X		
28	Skills Development	✓	✓	27 June 2013
29	Smoking	✓	✓	National Legislation
30	Special Skills	X		
31	Work Organisation	X		
32	Budget Related policies	✓	✓	12 June 2014

4.8. DISCLOSURE OF FINANCIAL INTEREST

COUNCILLORS

NAME AND SURNAME	ORG	WARD
Cllr T A Mogoje	ANC	Mayor
N Mashiya	ANC	Speaker
N Motsoeneng	ANC	Chief whip
Cllr R. M Lenake	ANC	PR Cllr
Cllr M Masisi	ANC	PR Cllr
Cllr M Mpesi	ANC	PR Cllr
Cllr T Thebehae	ANC	PR Cllr
Cllr R J Mokolutlo	COPE	PR Cllr
Cllr S Radebe	COPE	PR Cllr
Cllr H V Maas	VF+	PR Cllr
Cllr K Leburu	DA	PR Cllr
Cllr P Niewoudt	DA	PR Cllr
Cllr M Segalo	ANC	Ward 1
Cllr M Ncheche	ANC	Ward 2
Cllr R Bopiko	ANC	Ward 3
Cllr B Mabeleng	ANC	Ward 4
Cllr J Mamatela	ANC	Ward 5
Cllr M Marumole	ANC	Ward 6
Cllr M Tutubala	ANC	Ward 7
Cllr R Ramaele	ANC	Ward 8
Cllr T Mohloare	ANC	Ward 9
Cllr M Moshane	ANC	Ward 10
Cllr P Moepi	ANC	Ward 11
Cllr J Botma	DA	Ward 12

CHAPTER 5

FINANCIAL PERFORMANCE

Introduction:

Section 121 (1) dictates that every Municipality and every Municipal entity must for each financial year prepare an annual report in accordance with chapter 12 of the Municipal Financial management Act.

The purpose of an annual report amongst others is to provide a report on performance against the budget of the Municipality or Municipal entity for that financial year.

During the year under review, the Municipality was still entangled with prior year's challenges of non-reporting, non-compliance, financial backlogs, credit control, cash flow, and revenue.

Despite the challenges, the Municipality managed to put some systems in place so as to report the financial performance for the financial year 2014/15

Nala Local Municipality is dedicated to prudent financial management to ensure effective and efficient delivery of quality services to its customers.

GRANT PERFORMANCE						
DESCRIPTION	Year – 1	Year – 0			Year 0 Variance	
	Actual	Budget	Adjustment budget	Actual	Original budget (%)	Adjustment budget (%)
Finance Management Grant		R1,8m	R1,8m	R1,8m	0%	0%
Municipal Systems Improvement Grant		R934	R934	R934	0%	0%
Expanded Public Works Incentive Programme Grant		R1,034m	R1,034m	R1,034m	0%	0%
Municipal Infrastructure Grant		R43,248m	R43,248m	R43,248m	0%	0%

Integrated National Electricity Programme		00	R10,000m	R10,000m	0%	0%
INEP		R2,000m	R2,300m	R2,300m	0%	0%
Water Affairs		00	R2,300m	R2,300m	0%	0%

In the 2014/15 financial year the above-mentioned grants and subsidies were received by the Municipality. Unlike in the past administration, the municipality 100% expenditure on grants with all the conditions of the grants being met.

REPAIR AND MAINTENANCE EXPENDITURE				
R'000				
	Original budget	Adjustment budget	Actual	Budget Variance
Repairs & Maintenance	R7.338m	R3,534m	R7,900m	0%

In the 2014/15 financial year, the municipality did not provide adequately for repairs & maintenance. Due to cash flow problems in the municipality, the guidelines of National Treasury in terms of budgeting for repairs & maintenance could not be met.

CAPITAL EXPENDITURE OF LARGEST PROJECTS					
Name of project	Current year			Variance: Current Year 0	
	Original budget	Adjustment budget	Actual expenditure	Original variance (%)	Adjustment Variance (%)
Roads	R 24 300m	R 38 700m	R38 700m	0%	63%
Electricity	R 20 000m	R 21 000m	R 20 000m	0%	5%
Sport Facilities	R4 295m	R4 925m	R 4 925m	0%	0%
Waste Water Management	R 6 922m	R3 922m	R2,222m	0%	0%

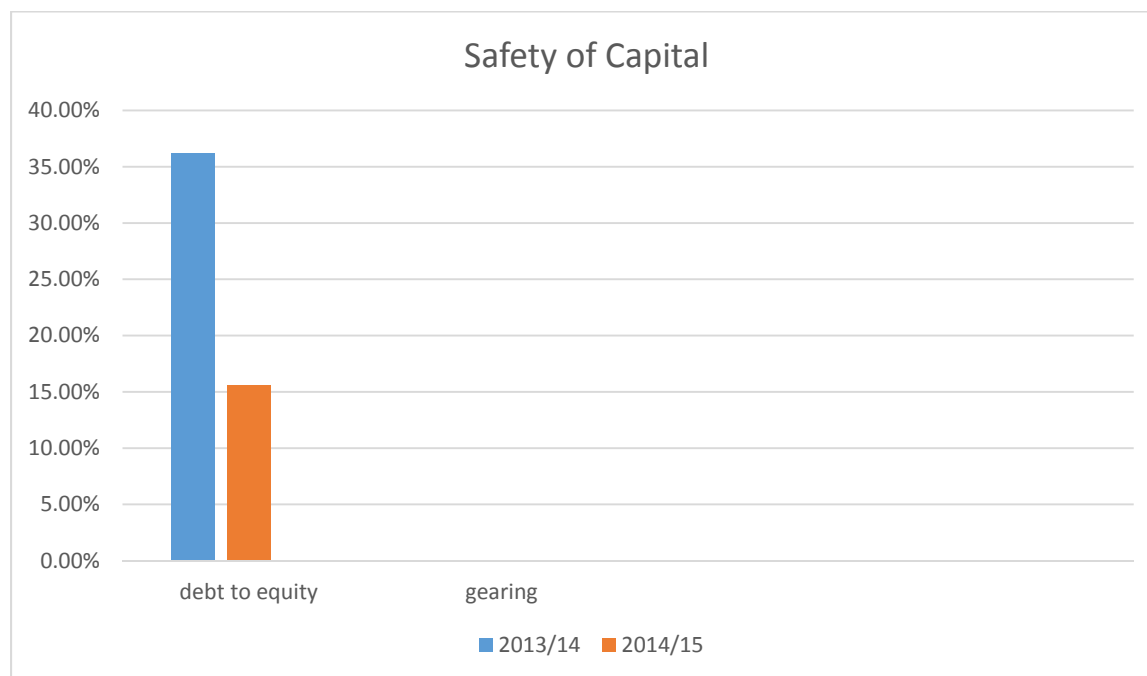
BUDGET STATEMENT-PERFORMANCE INDICATORS

DESCRIPTION OF FINANCIAL INDICATOR	BASIS OF CALCULATION	2013/14 AUDITED OUTCOME	2014/15 AUDITED OUTCOME
<u>Borrowing Management</u>			
Capital charges to Operating Expenditure.	Interest & principal paid/operating Expenditure	24.1%	9.1%
Borrowed funding of `own` capital expenditure	Borrowing/capital expenditure excl. transfers and grants	0.0%	0.0%

borrowing management



<u>Safety of Capital</u>			
Debt to Equity	Loans, Accounts payable, overdraft & tax provision/funds & reverses	36.2%	15.6%
Gearing	Long term borrowing/funds & reverses	0.0%	0.0%



Liquidity

Current Ratio

Current assets/current liabilities

37.0%

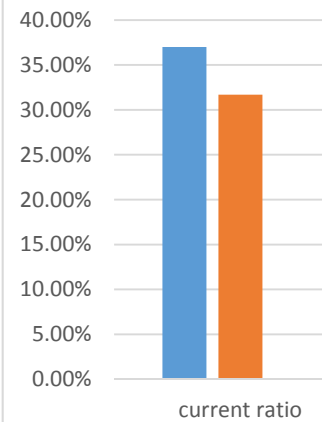
31.7%

Liquidity Ratio

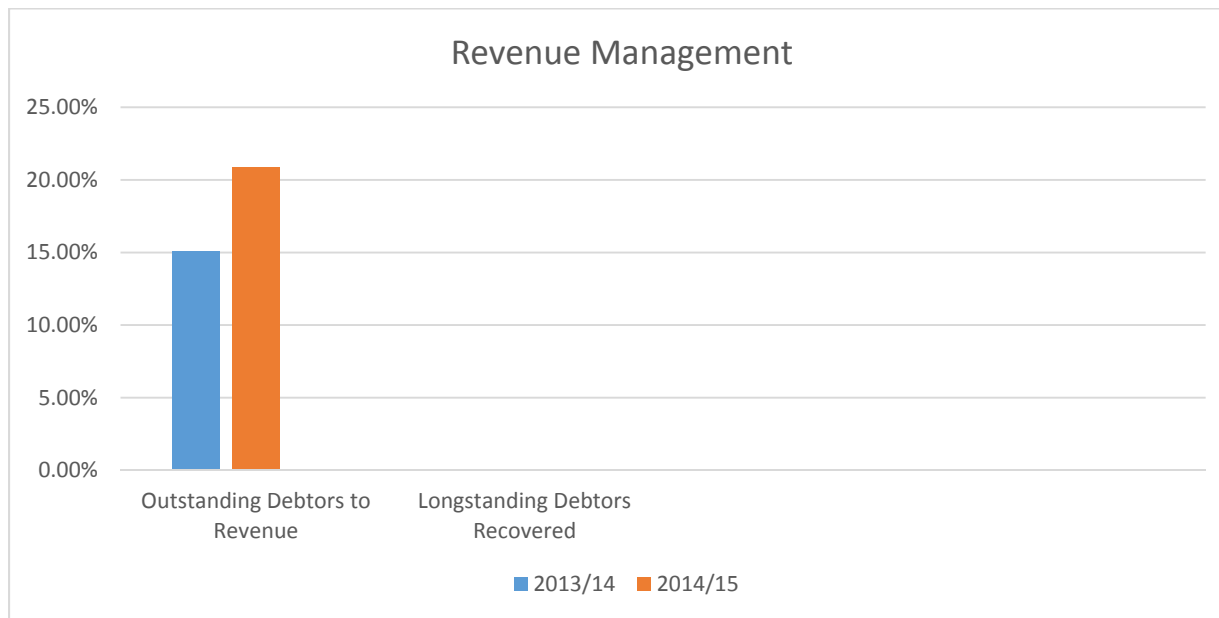
Monetary assets/current liabilities

12.8%

5.1%

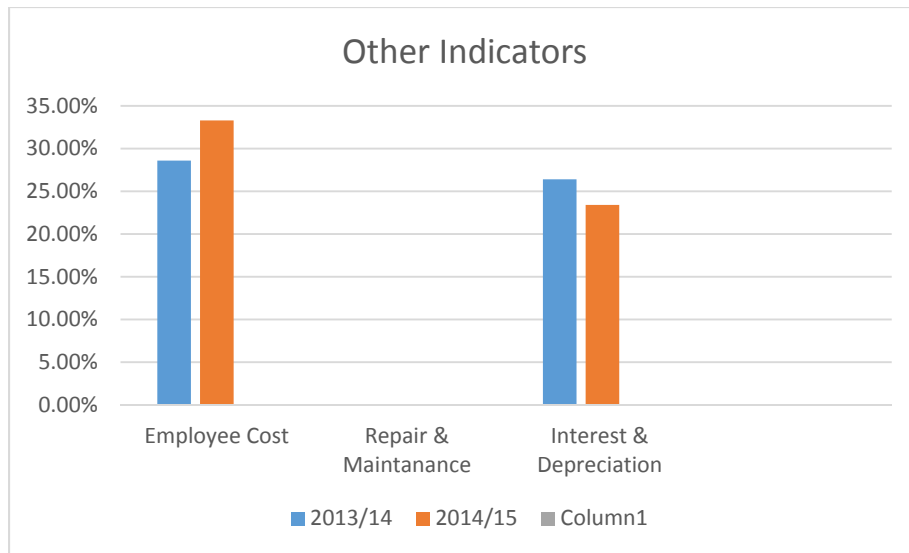


<u>Revenue Management</u>			
Annual Debtors Collection Rate (Payment Level %)	Last 12 Months receipts/last 12 Months billing		
Outstanding Debtors to Revenue	Total outstanding debtors to annual revenue	15.1%	20.9%
Longstanding Debtors Recovered	Debtors>12 Months recovered/total debtors>12 Months old		0.0%



<u>Creditor Management</u>			
-----------------------------------	--	--	--

Creditors System Efficiency	% of creditors paid within term(within MFMA s 65(e))		
<u>Funding of Provision</u>			
Percentage of Provisions not Funded	Unfunded Provision/Total Provision		
<u>Other Indicators</u>			
Electricity Distribution Losses	% volume (units purchased and generated less units sold)/units purchased and generated		
Water Distribution Losses	% Volume (units purchased and own source less units sold)/Total units purchased & own source		
Employee Costs	Employee costs/Total Revenue-capital revenue	28.6%	33.3%
Repair & Maintenance	R&M/Total Revenue – Capital revenue	0.0%	0.0%
Interest & Depreciation	I&D/Total Revenue – Capital revenue	26.4%	23.4%



<u>IDP Regulations Financial</u>			
<u>Viability Indicators</u>			
➤ Debt coverage	(Total Operating Revenue – Operating Grants)/debt service payments due within financial year)		
➤ O/S Services Debtors to Revenue	Total outstanding service debtors/annual revenue received for services		
➤ Cost Coverage	(Available cash + investments)/monthly fixed operational expenditure		

CHAPTER 6

AUDITOR GENERAL: AUDIT FINDINGS

6.1. AUDIT FINDINGS 2013/14

AUDIT OPINION: DISCLAIMER

ISSUES IDENTIFIED	DETAIL
1. Property, Plant and Equipment	The Municipality did not renew the residual values, useful lives, and depreciation method of Property, Plant and Equipment and perform an impairment assessment at each reporting date in accordance with SA Standards of GRAP 17.
2. Fruitless and Wasteful expenditure	The Municipality did not recognise the particulars of all fruitless and wasteful expenditure in the notes of the financial statement as required by section 125(2)(d)(i) of the MFMA
3. Payables from exchange transactions	During 2013, the Auditor-General was unable to obtain sufficient appropriate evidence for payables from exchange transactions.
4. Expenditure	During 2013, the Municipality did not accurately process expenditure transactions which resulted in expenditure being overstated.
5. Post-Employment Medical aid Provision	The Municipality did not value post-employment medical and benefits in accordance with SA standards of GRAP 20
6. Consumer Debtors	The Municipality did not recognise the provision for impairment loss in the current and in the prior year in accordance with SA Standards of GRAP 104.

6.2. **AUDIT FINDINGS 2014/15**

AUDIT OPINION: UNQUALIFIED

ISSUES IDENTIFIED	DETAIL
1. Irregular Expenditure	During the year under review mainly due to non-compliance with Supply Chain Management(SCM)
2. Material Losses	Material electricity and water losses
3. Performance Management	Material uncertainty that may cast significant doubt on the Municipality's current ability to meet its financial obligations as they fail due at to achieve service delivery objectives as audited in the Service Delivery and Budget Implementation Plan (SDBIP)

2014/15 ANNUAL PERFORMANCE REPORT ATTACHED

**APPENDICES
TO THE
ANNUAL REPORT
2014/15**

Appendix: A

Council and Committee meeting Attendance:

NAME AND SURNAME	FULLTIME/ PART-TIME	COUNCIL MEETINGS ATTENDED	COMMITTEE MEETINGS ATTENDED	SECTION 79 COMMITTEE
Theko Mogoje	FT	5	2	2
N Mashiya	FT	4	N/A	N/A
N Motsoeneng	PT	7	2	2
Cllr R. M Lenake	PT	7	1	1
Cllr M Masisi	PT	7	2	2
Cllr M Mpesi	PT	5	2	2
Cllr T Thebehae	PT	5		
Cllr R J Mokolutlo	PT	7		
Cllr S Radebe	PT	7		
Cllr H V Maas	PT	3		
Cllr K Leburu	PT	4		
Cllr P Niewoudt	PT	4		
Cllr M Segalo	PT	7	1	1
Cllr Ncheche	PT	4		
Cllr R Bopiko	PT	6		
Cllr B Mabeleng	PT	5		
Cllr J Mamatela	PT	7		
Cllr M Marumole	PT	7	1	1
Cllr M Tutubala	PT	7	1	1
Cllr R Ramaele	PT	5		
Cllr T Mohloare	PT	5		
Cllr M Moshane	PT	7		
Cllr P Moepi	PT	6		
Cllr J Botma	PT	7	2	2

Appendix B

SERVICE PROVIDERS:

NAME	PURPOSE
BIQ	Financial Management System
Syntell	Pre-paid Electricity
Nashua Mobile	Telephone
Eskom	Electricity
Sedibeng Water	Water
Mothapo Consulting	Civil Engineers
Thewo Consulting	Civil Engineer
Zingaro	Meter reading
Steiner	Cleaning Material
Bothaville Rekenaar Dienste	IT
Qophe	Contractor
NN Sekonya	Contractor
Lebogang Katleho JV	Contractor
Bankuna	Contractor
Bakgeni	Contractor

SERVICE LEVEL AGREEMENT AND LEASES:

PROJECT NAME	DIRECTOR	SITE	HECTORS	DURATION AND COMMENCEMENT DATE
1.Disabled people of South Africa	Me M. Sekgaphane	LED CENTER	office	3 years (19/10/2013)
2 .Disabled people of South Africa	Me M. Sekgaphane	Next to Poultry Project	5 ha	3 years (19/10/2013)
3. Bopanang Mafumahadi	Me. Enica Mbhele	LED CENTER	Office	3 years (19/10/2013)
4. Relebohile Poultry	Mr. Honono	LED CENTER	Office	3 years (19/10/2013)
5. Relebohile Poultry	Mr. Honono	Relebohile Poultry center	200 x 200m	3 years (19/10/2013)
6. Mgrow	Mr. J. Mpongose	Next to Patula	36 ha	3 years (19/10/2013)
7. Youth Standing Against Poverty	Mr. B. Masike	Monyakeng Entrance Next to bridge	5 ha	3 years (19/10/2013)
8. Mokati Manufacturing & Trading	Mr. Mokati	LED CENTER	Office	3 years (19/10/2013)
9. Monyakeng Juice Making	Me Matsietsi More	LED CENTER	Office	3 years (19/10/2013)
10. Boemo Project	Mr. F. Thomas	Relebohile Center	5 ha	3 years (19/10/2013)

DECLARATION OF INTEREST:

Names	Position	Yes/No
Theko Mogoje	Mayor	Yes
N Mashiya	Speaker	Yes
N Motsoeneng	Exco Member	Yes
Cllr R. M Lenake	Exco Member	Yes
Cllr M Masisi	Exco Member	Yes
Cllr M Mpesi	Exco Member	Yes
Cllr T Thebehae	PR Councillor	Yes
Cllr R J Mokolutlo	PR Councillor	Yes
Cllr S Radebe	PR Concillor	Yes
Cllr H V Maas	PR Cllr	Yes
Cllr K Leburu	PR Cllr	Yes
Cllr P Niewoudt	PR Cllr	Yes
Cllr M Segalo	Ward 1	Yes
Cllr Ncheche	Ward 2	Yes
Cllr R Bopiko	Ward 3	Yes
Cllr B Mabeleng	Ward 4	Yes
Cllr J Mamatela	Ward 5 and MPAC Chairperson	Yes
Cllr M Marumole	Ward 6	Yes
Cllr M Tutubala	Ward 7	Yes
Cllr R Ramaele	Ward 8	No
Cllr T Mohloare	Ward 9	Yes
Cllr M Moshane	Ward 10	Yes
Cllr P Moepi	Ward 11	Yes
Cllr J Botma	Ward 12	Yes

Appendix: E

FUNCTIONS PERFORMED BY THE MUNICIPALITY

INTRODUCTION:

The Constitution states in section 156(1) that a municipality has executive authority in respect of, and has the right to administer the local government matters listed in Part B of Schedule 4 and Part B of Schedule 5. These functions are contained in the table below.

Schedule 4 Part B	Schedule 5 Part B
<ul style="list-style-type: none">• Air pollution• Building regulations• Child care facilities• Electricity and gas reticulation• Firefighting services• Local tourism• Municipal airports• Municipal planning• Municipal health services• Municipal public transport• Municipal public works• Stormwater management systems in built-up areas• Trading regulations• Water and sanitation services	<ul style="list-style-type: none">• Billboards and the display of advertisements in• Cemeteries, funeral parlors and crematoriaCleansingControl of public nuisances• Control of undertakings that sell liquor to the public• Facilities for the accommodation, care and burial of animals• Fencing and fences• Licensing and control of undertakings that sell food to the public• Local amenities• Local sport facilities• Markets• Municipal abattoirs• Municipal parks and recreation• Municipal roads• Noise pollution• Pounds• Public places• Refuse removal, refuse dumps and solid waste disposal• Street trading• Street lighting• Traffic and parking

Appendix: F

FUNCTIONALITY OF WARD COMMITTEES

Name Of The Councillor	Ward	No. of Ward Com. Meeting held	No. of Community meetings held	No. of report submitted to the Speaker
Cllr M Segalo	Ward 1	-	-	-
Cllr M Dongeni	Ward 2	-	-	-
Cllr R Bopiko	Ward 3	-	-	-
Cllr B Mabeleng	Ward 4	-	-	-
Cllr J Mamatela	Ward 5	6	5	5
Cllr M Marumole	Ward 6	-	-	8
Cllr M Tutubala	Ward 7	3	1	6
Cllr D Mahalapa	Ward 8	-	2	3
Cllr T Mohloare	Ward 9	6	4	6
Cllr M Moshane	Ward 10	-	9	9
Cllr P Moepi	Ward 11	-	1	1
Cllr J Botma	Ward 12	-	-	-

WARD ONE

NAME(S)	ID. NO.	ADDRESS	Portfolio	CELL. NO.
1. Sekgalo Moses (chair)	510405 5386 085	2650/1 Wesselsbron	Ward Councillor	082 768 4493
2. Bonisile Victor Jack (sec)	811116 5948 081	1762 Monyakeng Location	Public Works	078 329 7618
				074 387 4228
3. Ensel Tshella	840108 5837 088	2100 Monyakeng Location	Safety and Security	073 791 0038
4. Sara Kabilo Tolo	731024 0529 087	2711 Monyakeng Location	Education	073 384 6030
5. Mekomela Gaoparwe	840806 6218 089	3991 Monyakeng Location	Health and Environment	073 904 7818
				079 099 0687
6. Mantsho Mantile	820812 0996 085	1871 Monyakeng Location	Sports Art and Culture	073 055 8340
7. Pringle Rakoti	720828 6101 086	2694 Monyakeng Location	Local Economic Devel	072 632 7108
				076 781 6129
8. Semimi Makhasane	600402 0425 084	2166 Monyakeng Location	Water and Sanitation	076 119 7777
9. Sabata Tau	810802 5839 088	2658 Monyakeng Location	Social Welfare	078 847 0090
10. Manana Mpatane	830109 5837 088	39 Monyakeng Location	Housing	073 989 4573
11. Buzeka Martha Mvala	790824 1111 084	2208 Monyakeng Location	Agriculture	079 435 1734

WARD TWO

--	--	--	--	--

1. Molatudi Dongeni (chair)	691121 5388 085	3328 Monyakeng Loc	Ward Councillor	078 537 6723
2. Ace Van Vyck (sec)	761220 6032 083	3536 Monyakeng Loc	Public Works	079 187 4311
3. Mojaki Tlholakae	480824 5565 082	214 Monyakeng Loc	Education	082 255 1273
4. Mafusi Tsolo	831001 1036 089	3306 Monyakeng Loc	Safety and Security	078 624 4388
5. Neo Andrew Taole	770228 5413 088	239 Ntshidi Street	Health and Environment	079 445 2627
6. Pinky Motaung	710616 0937 080	9750 Monyakeng Loc	Sports Art and Culture	083 872 9312
7. Sisi Mthombeni	711015 0627 081	4029 Monyakeng Loc	Local Economic Devel	078 608 5004
8. Lennox Mangojane	790519 5792 083	220 Monyakeng Loc	Water and Sanitation	073 359 2766
9. Josiele Moshane	831216 5999 088	3567 Monyakeng Loc	Social Welfare	060 362 7947
10. Mango Kgang	800402 0979 088	3551 Monyakeng Loc	Housing	083 319 8815
11. Nonny Selina Tsiloane	780706 0926 087	4170 Monyakeng Loc	Agriculture	073 374 7199
WARD THREE				
1. Hilda Bopiko (Chair)	711202 0551 087	732 Monyakeng Loc	Ward Councillor	073 800 6942
2. Buti Ntsabo (Sec)	780806 5305 087	3060 Monyakeng Loc	Sport and Recreation	082 762 6211
3. Memoepi Nyelele	691126 0754 082	3005 Monyakeng Loc	Housing	073 646 2885
4. Berlina Mabeleng	620801 0844 085	724 Monyakeng Loc	Social Welfare	078 380 6367
5. Sarah Konoakonoane	670407 0581 088	853 Monyakeng Loc	Roads	076 101 4156
6. Ndlela Majake	581201 0552 084	3152 Monyakeng Loc	Water and Sanitation	073 049 8874
7. Joyce Takadimane	650418 0551 084	1157 Monyakeng Loc	Education	078 908 8968
8. Mmakalabe Mkhosi	691106 0497 080	1199 Monyakeng Loc	Health	078 410 9258
9. Papi Maleme	830512 7550 088	1074 Monyakeng Loc	Safety & Security	078 711 7666
WARD FOUR				
1. Bushy Mabeleng (chair)	780721 5572 083	9943 Monyakeng Location	Ward Councillor	078 188 9953
2. Nozililo Skei (Sec)	890423 1050 084	5302 Monyakeng Location	Public Works	071 754 2939
3. Malefu Makhasane	701227 0696 089	4990 Monyakeng Location	Education	083 483 5178
4. Nombulelo Wittes	751030 0536 084	4389 Monyakeng Location	Health and Environment	083 872 7058
5. Pitso Lekopa	820128 6049 081	5500 Monyakeng Location	Sports Art and Culture	073 204 1683
6. Berlina M. Sehuba	820128 6049 081	4267 Monyakeng Location	Local Economic Devel	082 536 5649
7. Maruping Piet Bocheli	720919 5450 085	4211 Monyakeng Location	Water and Sanitation	078 244 5147
8. Mananki Kganadi	770204 1223 080	2507 Monyakeng Location	Social Welfare	073 676 4874
9. E.T Skwelite	631223 5725 085	4655 Monyakeng Location	Housing	072 179 4467
WARD FIVE				

1. Jeremiah Mamatela (chair)	560313 5278 089	2714 Kgotsong Location	Ward Councillor	074 685 3496
2. Motlalekgomo Sebolai (Sec)	861214 1013 080	184 Kgotsong Location	Health	073 971 6242
3. Mamsy Marumo	710104 0839 085	5500 Kgotsong Location	Social develop/Home aff	084 725 0986
4. Kolo Mosuang	580109 0910 080	1340 Kgotsong Location	Housing	084 696 3883
5. Lebakeng Seduku	530410 5673 082	945 Kgotsong Location	Education	078 841 3202
6. Mathota Nyamane	830202 0685 089	1539 Kgotsong Location	Water and Sanitation	074 442 7279
				079 123 6437
7. Mabusela Makwetla	890326 6862 084	2111 Kgotsong Location	Environment	073 314 6353
8. Thembane Masheqa	540224 5672 089	361 Kgotsong Location	Safety & Security	074 738 1858
9. Tsietsi Samuel Tsolo	811007 5487 081	660 Kgotsong Location	Justice/Communication	073 578 9721
WARD SIX				
1. Monare Marumule (chair)	720517 5512 084	2115 Kgotsong Location	Ward Councillor	073 441 5458
2. Nunu Motlounq	600324 0427 082	853 Kgotsong Location	Education	083 877 9647
3. Menzi Menzi	830721 5486 086	1132 Kgotsong Location	Safety and Security	073 924 3431
4. Tlaleng Morosi	680320 0458 082	5624 Kgotsong Location	Health and Environment	073 178 6173
5. Taedi Ramasimong	660627 5372 082	609 Kgotsong Location	Sports Art and Culture	072 357 8346
6. Emely Molise	670130 0406 086	5786 Kgotsong Location	Local Economic Devel	071 420 8288
7. Mpina Tekane	880531 0889 088	1165 Kgotsong Location	Water and Sanitation	071 744 7762
8. Sambuti Monyane	770701 5850 087	2133 Kgotsong Location	Social Welfare	073 165 0079
9. Julius Mutuchi	420420 5576 089	5422 Kgotsong Location	Housing	073 570 6289
10. Sebolelo Ramongalo	890627 1066 086	5559 Kgotsong Location	Agriculture	078 020 5283
WARD SEVEN				
1. Martha Tutubala (chair)	601221 0782 081	5014 Kgotsong Location	Ward Councillor	071 830 3941
2. Teboho Sebotsa (Sec)	810203 6388 086	2584 Kgotsong Location	Safety and Security	083 682 0023
3. Mahlomola Tsetsi	730509 5588 089	5822 Kgotsong Location	Corporate Governance	076 926 7011
4. Xakiwe Mokete	790825 0709 083	5049 Kgotsong Location	Public Works	073 986 7948
5. Martha Matiwane	560116 0510 087	6384 Kgotsong Location	Social Development	083 771 4432
6. Khonou Sello	781224 5328 084	6223 Kgotsong Location	Sports, Arts & Culture	084 663 0629
7. Maleshoane Khothule	690211 0783 083	6588 Kgotsong Location	Health	073 735 6037
8. Manthoba Mohapi	680316 0671 088	3608 Kgotsong Location	Human Settlement	076 096 0202
9. Neryea Khothole	6212070281 089	4992 Kgotsong Location	Education	072 962 0930
10. Motsie Mokhothu	760411 5628 085	2530 Kgotsong Location	Disater Management	084 574 3968
WARD EIGHT				

1. Ruth Ramaele	680721 0339 083	4512 Kgotsong Location	Ward Councillor	073 657 6189
2. Dikoko Morutsile(sec)	630527 5717 087	10793 Kgotsong Location	Human Settlement	071 023 8622
3. Lettie Moketsane	871115 6228 088	7471 Kgotsong Location	Water Sanitation & Waste	082 964 2022
4. Mamoroesi Ramatema	670209 0473 088	6003 Kgotsong Location	Sports, Arts 7 Culture	074 820 9484
5. Thys Tau	760306 5507 083	11206 Kgotsong Location	Infrastructure	076 321 6558
6. Mantsho Motsemme	771122 0707 082	6269 Kgotsong Location	Home Affairs	072 456 5268
7. Morakane Makgathe	730401 0896 081	11070 Kgotsong Location	Health	073 133 4051
8. Anna Motolo	850829 1021 080	4798 Kgotsong Location	Social Development	078 556 7636
9. Tsietsi Nkojoa	840807 5825 080	4816 Kgotsong Location		073 672 1331
WARD NINE				
1. Thabo Mohloare (chair)	670908 5490 084	10355 Kgotsong Location	Ward Councillor	072 426 2752
2. Motlalepule Lekitlane(sec)	720429 0655 084	9213 Kgotsong Location	Human Settlement	071 547 0059
3. Mohapi Mokeretla	790701 5349 086	9482 Kgotsong Location	Safety & Security	073 618 5705
4. Dikeledi Ntamo	811124 0923 083	8811 Kgotsong Location	Customer Care	079 164 9178
5. Martha Mogoaladi	810804 0413 083	10568 Ditshetlong Sec	Disaster Management	073 179 6602
6. Paseka Makhaya	730416 6194 083	8992 Naledi Sec	Education	076 222 9383
7. Sara Mxothu	680316 0730 082	10584 Kgotsong Location	Finance	073 884 3140
8. Mamotaung Molutsi	780717 0436 084	11447 Kgotsong Location	Health	073 620 1897
9. Kleinbooie Mantjie	831123 5821 082	10762 Kgotsong Location	Sports,Arts,Culture	083 600 5864
10. Pana Manku Ramadibe	790108 0942 081	9556 Kgotsong Location	Coorporate Services	082 319 1853
11. Mohale Pulane Cecillia	780105 0347 081	8826 Kgotsong Location	Pauper Funerals	083 339 804
WARD TEN				
1. Zacharia Moshane (Chair)	660517 5648 088	Box 75 Wesselsbron	Ward Councillor	082 423 2687
2. Madiehi Kgama (Sec)	870920 1547 088	Wilvedag Farm	Sports and Recreation	078 148 0989
3. Motshidisi Moeketsi	850519 0231 084	Schoonspruit Farm	Public Works	073 740 1923
4. R.W. Mokhothu	831223 5800 084	Visagieskuil Farm	Health and Safety	084 440 4496
5. Mpotseng Maile	931026 1078 086	Goudkwaarts Farm	Education	076 413 1027
6. Mina Majoro	791116 0710 084	Magrita Farm	Health and Safety	073 867 1781
7. Eric Mgenzi			Rural Development	
8. Joel Kumalo	791114 5351 087	Rusplaas Farm	Education	076 972 6849
9. Maria Ntomane	810201 1128 085	Helpmekaar Farm	Disaster management	073 995 2623
10. Phongola Nicky	860620 0654 084	Voltruispan Farm	Home Affairs	072 705 0107
11. William Ntshidi Molawa	760104 5317 086	Visagieskuil Farm	LED	076 930 4782
WARD ELEVEN				

1. Abel Moepi (Chair)	660210 5454 083	7366 Kgotsong Location	Ward Councillor	078 139 9801
				076 265 6121
2. S.P. Medupe (Sec)	720726 5527 083	6907 Kgotsong Location	Youth Development	076 477 0121
3. Dieketseng Snymes	640701 0871 086	1735 Kgotsong Location	Sport Arts and Culture	083 673 0051
4. Menzi Molehadi	850625 0506 084	7365 Kgotsong Location	Home Affairs	078 739 0650
5. Mantwa Ntseki	740726 0597 082	7776 Kgotsong Location	Disaster Management	078 414 3718
6. George Dlamini	720609 5839 086	8476 Kgotsong Location	Public Works	073 653 9389
7. Inah Ramakhale	7220 0867 088	2033 Kgotsong Location	Health	074 562 7510
8. Morgan Motsie	720906 6121 088	10076 Kgotsong Location	Housing	076 897 5599
9. Tommy Nyaku	690418 5412 084	9899 Kgotsong Location	Education	078 426 1214
10. Alinah Tsoene	651029 057 089	8476 Kgotsong Location	Safety and Security	076 632 9040
WARD TWELVE				
1. Johannes Botma(chair)	500316 5022 087	Box 16 Bothaville	Ward Councillor	082 826 6607
2. Boiki Mabaso(sec)	680916 5929 082	1671 Nthejane street	Public Works	072 717 0250
3. Lipuo Litaole	671214 0343 082	11574 Kgotsong Location	Safety and Security	076 600 6055
4. Pontso Majoe	801106 5170 085	26 Bothaville	Health and Environment	078 404 3817
5. Magsy Mahlatsi	701006 0900 083	1941 Lebeko street	Sports Art and Culture	079 863 2134
6. Dumisane Radebe	871127 6039 082	35 Bothaville	Social Welfare	084 027 8673
7. J.E. Hannelie Mounon	681119 9002 080	Bothaville	Housing	082 752 7874
8. William Venter	731129 5031 086	Bothaville	Agriculture	078 556 8750
9. Tata Oupaki	741005 5492 080	1895 Kgotsong Location	Education	083 480 4994

Appendix G:

BY-LAWS

Name of by-law	New/ revised	Public participation conducted Yes/No	Dates of Public participations	By-laws gazette yes/No	Date of Publication
1. Street Vendors, Peddlers and Hawkers.	NEW	YES	14-16 October 2014	YES	December 2011
2. Dumping and Littering.	NEW	YES	14-16 October 2014	YES	December 2011
3. Electricity Supply.	NEW	YES	14-16 October 2014	YES	December 2011
4. Street Trading.	NEW	YES	14-16 October 2014	YES	December 2011
5. Indigent Support.	NEW	YES	14-16 October 2014	YES	December 2011
6. Taxi Rank.	NEW	YES	14-16 October 2014	YES	December 2011
7. Building Regulations	NEW	YES	14-16 October 2014	YES	December 2011
8. Control of Collections	NEW	YES	14-16 October 2014	YES	December 2011
9. Bed and Breakfast and Guesthouse.	NEW	YES	14-16 October 2014	YES	December 2011
10. Advertising	NEW	YES	14-16 October 2014	YES	December 2011
11. Fire and Emergency Services.	NEW	YES	14-16 October 2014	YES	December 2011
12. Tariff Policy.	NEW	YES	14-16 October 2014	YES	December 2011
13. Unsightly and Neglected buildings	NEW	YES	14-16 October 2014	YES	December 2011

Appendix H:

INDIGENT REGISTER 2014/15

Ward	Number of registered indigents
Ward 1	606
Ward 2	332
Ward 3	575
Ward 4	415
Ward 5	716
Ward 6	828
Ward 7	760
Ward 8	800
Ward 9	1210
Ward 11	1416
Ward 12	107

TOTAL	7765
-------	------